



SHARING THE TRADITION

COW SALE



FRIDAY,
MAY 21, 2021

SELLING FROZEN GENETICS
STARTING AT 7:00 P.M.

SATURDAY,
MAY 22, 2021

SELLING 200 HEAD OF HEREFORD
MAINE & ANGUS COWS
STARTING AT 12:30 P.M.



FRIDAY, MAY 21, 2021

PREVIEW SALE OFFERING

7:00 PM SELLING FROZEN GENETICS
FOLLOWED BY MEAL & SOCIAL

*Elite embryo packages and semen on limited
availability sires.*

SATURDAY, MAY 22, 2021

11:30 PM LUNCH SERVED

12:30 PM SELLING 200 HEAD OF HEREFORD,
MAINE & ANGUS SPRING PAIRS
AND FALL BRED COWS

*Offering will include 60 head of Hereford Spring Pairs,
50 head of Hereford Fall Breds, 50 head of Maine,
Angus and Club Calf Spring Pairs and 40 head of
Maine-Anjou, Angus and Club Calf Fall Breds*

AT THE RANCH MADILL, OK



WATCH AND BID ONLINE
Register and Bid Online at www.cci.live

SALE DAY PHONES

Jirl Buck	580.795.4865	Matt Scasta.....	580.220.7288
Brett Carter	580.759.9694	Office, Brenda	580.677.2647
Davey Young	931.478.0527	Ethan Moore.....	580).795.6707

SALE REPRESENTATIVES

Steve Bonham, <i>Auctioneer</i>	405.823.2964		
Dustin Layton, <i>Auctioneer</i>	405.464.2455		
Brett Carter	580.759.9694	Jeremy Clark	501.207.1796
Bobby Singleton	615.708.1034	Tim Burke	402.750.0440
Brian Martin	806.578.4729	Brent Tolle	502.905.7831
Nic Fitzsimmons	712.790.0731	Dave Allan	979.561.7115
Mark McClintock.....	325.650.4223	Zack Eagle	319.333.9861
John Boddicker.....	816.510.7099	Craig Talkington	785.623.1789
Ryan Denton	918.629.3004	Kent Jaecke	405.408.2440
Christy Collins, CCI Live.....	580.305.0001		
DeRon Helderman, <i>Representing Oklahoma Cowman</i>	405.850.5102		
Chisolm Kinder, <i>Representing Oklahoma Cowman</i>	405.747.4683		
Phil Stoll, <i>Representing Weekly Livestock Reporter</i>	817.366.7332		
Colton Pratz, <i>American Hereford Association</i>	405.380.1054		

SPECIAL GUESTS

Blake Nelson	American Maine-Anjou Association
Lindsey Broek.....	American Maine-Anjou Association
Josh Cribbs.....	American Maine-Anjou Association
Jack Ward	American Hereford Association
Shane Bedwell.....	American Hereford Association
Amy Cowan	American Hereford Association
Bailey Clanton	American Hereford Association
Colton Pratz	American Hereford Association
Jack Chastain.....	Texas Hereford Association

ACCOMMODATIONS

Best Western Plus, <i>Madill, OK</i>	580.677.9890
LaQuinta Inn & Suites, <i>Ardmore, OK</i>	580.220.2990
Holiday Inn, <i>Ardmore, OK</i>	580.226.3333
Courtyard by Marriott, <i>Ardmore, OK</i>	580.224.2764
Spring Hill Suites by Marriott, <i>Ardmore, OK</i>	580.226.7100

GENERAL SALE INFORMATION

Cash or check accepted. Updated PHA & TH results and current EPD's on the Hereford females by sale day. This information and the sale order will be posted on our website at www.buckcattle.com and our FaceBook page prior to sale. All cattle sell under the standard terms and conditions of the American Maine-Anjou Association & the American Hereford Association. **Exception, females are guaranteed to breed or produce transferable IVF embryos.** If female is evaluated by a licensed veterinarian and is considered obese, breeding guarantee is voided. **Buck Cattle Co reserves the right to two flushes on all females selling.** We will pay flush expense. Registration papers will be transferred following the sale if buyer has paid and provided transfer information.

ABSENTEE BUYERS

Each sale we sell several cattle to buyers that cannot attend the sale. If you are unable to attend please contact us to discuss the cattle and we will have a representative handle your bidding confidentially.

INSURANCE

Bar H Insurance Donna Hardman	580.364.6885
Jensen Livestock Agency	785.262.1116
Affiliated with Liberty Mutual Insurance, Sheila Jensen	

TRUCKING

Nick Goings

765.586.6541

We will be happy to assist in organizing trucking.



SALE MANAGEMENT

Dustin Layton, 405.464.2455
laytond@yahoo.com

WELCOME TO SHARING THE TRADITION SALE

The number one question people ask is why are you selling these cows? We actually need to run about 250 head here and we are currently at 500. Question two is, how did you base your selections? We are basically keeping two-year-olds, bred heifers, open heifers, the older donors, and a few odds and ends. This offering is loaded with great females! Over half of the lots are three-year-old and four-year-old cows. We are extremely proud of these cattle and look forward to watching them work for you.

We have been fortunate to be involved with two great breeds of cattle. We have focused on functional females that survive in the real world and look good doing it. When you look through this catalog you will see generations of our breeding program. We have been breeding Maine cattle for 35 years and they have provided a good living for us. Maine-Anjou cattle are better today than they have ever been, and we anticipate a bright future. We have been breeding Herefords for 11 years and we went into it aggressively from the start. We believe in Hereford cattle and are excited about continuing our involvement in the breed.

For 26 years, we have been blessed to have two annual sales in the Spring and Fall, and we have sold numerous State and National Champion females in those sales. Our heifer sales represent our top end, along with many of our customer's top prospects. We would love to include offspring from these females selling in our future sales. If you are interested, please let us know and we will work out the details.

It takes a small army to make these sales happen and we truly appreciate every one of you. Special thanks to Matt Scasta, Davey Young, Caleb Nixon, and Seth Buckley, these guys hit it hard every day and we don't say thank you often enough. We were also fortunate to have Shannon Cook take the photos and videos; she was a pleasure to work with and did an awesome job.

Join us Friday evening for supper followed by our frozen offering auction at 7:00 pm, which consists of elite embryos and limited availability semen. This is a sale of opportunities, study this catalog, and come look through the cattle in person, the good stuff is here!

We hope you can make it Friday and Saturday for a great weekend of fellowship and good cattle. If you cannot make it, you can register to watch and bid online at CCI.live.

Thank you,
 Jirl

VIDEOS OF SALE CATTLE
 WILL BE POSTED AT WWW.BUCKCATTLE.COM
 THE WEEK PRIOR TO THE SALE.

JIRL, BRENDA & BAILEY BUCK
 580.795.4865 mobile • Madill, OK 73446
jirl@buckcattle.com \ www.buckcattle.com
 Matt Scasta, 580.220.7288
 Davey Young, 931.478.0527



All Buck cattle are fed MFM Feed. Talk to us about their advantages.





Daughter of Lot 1.



POLLED & HORNED
HEREFORD

*Spring
Pairs*

1 BK BASE POINTS 421B ET

Reg # 43531138 NJW 98S R117 RIBEYE 88X ET SHF RIB EYE M326 R117
 DOB: 05.18.2014 NAW 9126J DEW DOMINO 98S
 Horned Hereford DELHAWK KAHUNA 1009 ET
 Spring Pair HAPP KOOL AID POINTS 1218 ET CRANE STYLE POINTS 945

EPD's CE: 8.1 BW: 1.2 WW: 54 YW: 84 MILK: 28 REA: 0.50 MARB: 0.20

- AI Bred 05.7.2021 to SR DOMINATE 308F.
- Here is one of the power cows of the offering that is a direct daughter of the 2013 JNHE Grand Champion Horned Female Happ Kool Aid Points 1218. Elite look and style with a calving-ease EPD profile that allows multiple mating options.
- She has produced three heifer calves, they all sold in our Fall Premier Sales.
- She is a full sister to the 2018 National Western Champion Horned Female.
- Average progeny ratios 5@94 for BW, 2@105 for WW.
- Ranks in the top 10% for CED, REA, BII; top 15% for BMI, MARB; top 20% for MM, CHB; top 25% for BW.
- **LOT 1A - AHA# 44238454 - February 20th heifer by BK BH Fast Ball F102 ET.**

2 HAPP VALERIE 3D ET

Reg # 43728527 HAPP EXTRA POINT 1220 ET DELHAWK KAHUNA 1009 ET
 DOB: 01.25.2016 CRANE STYLE POINTS 945
 Horned Hereford JSF 12N LADY VAL 9T
 Spring Pair GHC BEAR 12N
 HSF 60G LADY VAL 48K

EPD's CE: -1.2 BW: 2.2 WW: 52 YW: 80 MILK: 22 REA: 0.28 MARB: 0.00

- AI bred 05.07.2021 to H The Profit 8426 ET.
- Big time female! Here is a full sister to the great HAPP BK Valor 37C, she is flawless in her design, short marked, and a producer. She stamps her look and design onto her offspring.
- She has never been flushed but she certainly needs to be! Just study this female there is not much to change she has the color, power, design and pedigree to be big time.
- Dam is the immortal 9T female that sold at Happ Farms in their Fall 2019 production sale. Even at thirteen years of age she looked young as ever, with a picture perfect udder.
- Ranks in the top 15% for CW; top 20% for REA. Average progeny ratio 1@109 for WW
- **LOT 2A - AHA# 44238455 - March 5th, heifer by H The Profit 8426 ET.**



LOT 3



JDH HA Standout 16G, sire of Lot 3A.



Daughter of Lot 4, spring 21 Lot 71



LOT 4

3 /S LADY HOMETOWN 5098C ET

Reg # 43616741 SHF WONDER M326 W18 ET
 DOB: 02.02.2015 NJW 73S W18 HOMETOWN 10Y ET
 NJW P606 72N DAYDREAM 73S
 Horned Hereford HH ADVANCE 286M 1ET
 Spring Pair /S LADY ADVANCE 8066U
 /S LADY DOMINO 424P

EPD's CE: 3.3 BW: 2.8 WW: 63 YW: 104 MILK: 29 REA: 0.60 MARB: 0.10

- AI bred 05.07.2021 to H The Profit 8426 ET.
- Here is a big time donor female with all the bells and whistles. Short marked, red-eyed, huge middled, well balanced and stout based. She has been tested MD free
- Study her elite EPD profile as she excels with a moderate birth weight and explosive performance with value added carcass weight and REA.
- A combination of female that excels visually and on paper which is very valueable.
- Average progeny ratio 3@95.7 for BW.
- Ranks in the top 1% for CW; top 2% for BMI, BII; top 3% for CHB; top 5% for YW; top 10% for WW, REA; top 20% for MM.
- **LOT 3A - February 11th bull by JDH AH Standout 16G.**

4 LFF BECKY 406B ET

Reg # 43502947 SHF WONDER M326 W18 ET
 DOB: 04.23.2014 NJW 73S W18 HOMETOWN 10Y ET
 NJW P606 72N DAYDREAM 73S
 Polled Hereford H ODETTA 001 ET
 Spring Pair GOLDEN OAK OUTCROSS 18U
 CHURCHILL LADY 583R

EPD's CE: 1.8 BW: 3.9 WW: 58 YW: 86 MILK: 32 REA: 0.47 MARB: 0.19

- AI bred 05.7.2021 to H The Profit 8426 ET.
- This great female has been in our donor pen the last couple of years. She is massive bodied, awesome structured, powerful, and great looking.
- She produced two heifers that sold for \$32,000, \$12,000, and most recently she had a heifer calf sell for \$11,000 in our Spring Edition Sale.
- Here is the chance to acquire a big time proven donor that is one incredible beast.
- Average progeny ratio 3@101.3 for WW
- Ranks in the top 4% for BMI, BII; top 10% for MM; top 15% for WW, UDDR, TEAT, MARB, CHB; top 20% for CW, REA.
- **LOT 4A - AHA# 44238456 - March 31st bull by C KRC 1008X Miles 4288 ET.**



LOT 5



Daughter of Lot 5.



HAPP Kool Aid Points 1218, a full sister to Lot 6.



LOT 6

5 CMCC DIAMOND 6051D ET

Reg # 43772544
 DOB: 09.17.2016
 Polled Hereford
 Spring Pair

NJW 73S W18 HOMETOWN 10Y ET
 BKWR AMETHYST 3050A ET

SHF WONDER M326 W18 ET
 NJW P606 72N DAYDREAM 73S
 AH JDH CRACKER JACK 26U ET
 BLACKTOP VICKY 028 ET

EPD's CE: 5.1 BW: 2.8 WW: 54 YW: 88 MILK: 28 REA: 0.42 MARB: 0.15

- AI bred 05.07.2021 to SR Dominate 308F.
- Here is a sale feature, 6051 is not only striking to look at, she is rich in proven genetics as well! Striking on the profile as she displays an abundance of body, shape, muscle, bone and is equipped with a picture perfect udder. This female right here is flat out good cattle! Average progeny ratio 1@104 for WW.
- She is sired by one of the most popular sires in the breed, known for calving ease and his ability to produce the greats.
- Ranks in the top 15% for UDDR, TEAT, CHB; top 20% for MM, CW; top 25% for CED, BW, MARB.
- **LOT 5A - February 6th, bull by JDH AH Standout 16G.**

6 HAPP A POINT TAKEN 3059 ET

Reg # 43458280
 DOB: 09.07.2013
 Polled Hereford
 Spring Pair

DELHAWK KAHUNA 1009 ET
 CRANE STYLE POINTS 945

CH ENUFF PROPHET 2913
 MCR PPF MISS GOLD DOM 206 ET
 CH 372 POT OF GOLD 7120 ET
 CH MISS DIAL 6311

EPD's CE: -1.9 BW: 4.3 WW: 59 YW: 96 MILK: 25 REA: 0.65 MARB: -0.08

- AI bred 05.07.2021 to H The Profit 8426 ET.
- Here is a full sister to the immortal National Champion Female HAPP Kool Aid Points 1218. She is a big stout rip with added bone, power, balance and quality. Her dam Style Points is now deceased so take advantage of this elite genetic package as it will not be replicated.
- Don't overlook The Profit calf at her side!
- Average progeny ratio 3@101.7 for WW.
- Ranks in the top 4% for REA; top 10% for CW; top 15% for WW; top 20% for YW.
- **LOT 6A - AHA# 44238497 - March 6th heifer By H The Profit 8426 ET.**



ECR 3116 Adventure 7647 ET, sire of Lot 7A.

LOT 7



H The Profit 8426 ET, service sire to Lot 8.



LOT 8

7 /S RRC R117 MISSY 4201

Reg # 43465094	SHF RIB EYE M326 R117	KCF BENNETT 3008 M326
DOB: 02.25.2014		HVH MISS HUDSON 83K 8M
Polled Hereford		NJW 98S DURANGO 44U
Spring Pair	CB 44U 2U LITTLE MISSY 4Y	NM MISS GYPSY BOZZ 2U

EPD's CE: -1.7 BW: 3.9 WW: 55 YW: 84 MILK: 26 REA: 0.63 MARB: 0.22

- AI bred 05.07.2021 to SR Dominate 308F.
- This direct daughter of the proven performance sire R117 is an outstanding female that is a producer. 4201 is red-eyed, short marked, big middled, stout hiped and just flat out good from end to end. She originated from the Shaw program in Idaho and has done an outstanding job for us. Average progeny ratios 2@103 for WW and 1@104 for YW.
- We only had one heifer out of her and she made our Fall Premier Sale lineup, and not many make that line up!
- Ranks in the top 5% for REA; top 10% for MARB, BMI, BII, CHB.
- **LOT 7A - AHA# 44238457 - March 3rd, bull by ECR 3116 Adventure 7647 ET.**

8 BK DEENA 6204D

Reg # 43802305	DEP GENERATION X 122 ET	GOLDEN OAK OUTCROSS 18U
DOB: 08.26.2016		C MISS PLATINUM 8039 ET
Polled Hereford		GO EXCEL L18
Spring Pair	K&B EXCEL 6007S	K&B MS 927 ADVANCE 3205

EPD's CE: 4.9 BW: 2.4 WW: 46 YW: 75 MILK: 30 REA: 0.27 MARB: -0.03

- AI bred 05.07.2021 to H The Profit 8426 ET.
- This female will demand your attention with her added extension, body, balance, style and levelness of hip. You have to admire the amount of rib and power she has yet puts it all together in a very attractive package.
- She is sired by Generation X which did an awesome job producing cattle with looks and power, but when his daughters hit production that's when he got our attention.
- Big time female with a big time future.
- Ranks in the top 10% for MM; top 25% for CED.
- **LOT 8A - AHA# 44238458 - March 2nd heifer by H The Profit 8426 ET.**



LOT 9

9

BK CATRINA 5117C

Reg # 43639909	DEP GENERATION X 122 ET	GOLDEN OAK OUTCROSS 18U
DOB: 04.01.2015		C MISS PLATINUM 8039 ET
Polled Hereford	BK ZIGGITY 262	CRR ABOUT TIME 743
Spring Pair		BLACKTOP VICKY 028 ET

EPD's CE: 4.4 BW: 2.5 WW: 45 YW: 78 MILK: 27 REA: 42 MARB: -0.02

- AI bred 05.07.2021 to BK BH Fast Ball ET.
- The Generation X daughters have been great producers for us, we didn't have many but they didn't miss. Her dam is sired by About Time out of Blacktop Vicky, the great cows always surface.
- She produced two females that sold really well in our online sales, one that we have in the replacement pen now, and one powerful herd bull.
- As you study this female you have to appreciate the shape, muscle, balance, style, added pigment and short markings.
- Average progeny ratio 4@99.3 for BW. Ranks in the top 25% for MM.
- **LOT 9A - AHA# 44238459 - March 2nd bull by H The Profit 8426 ET**



LOT 10

10

BK ELECTRIC STAR 7575E

Reg # 43912643	DEP GENERATION X 122 ET	GOLDEN OAK OUTCROSS 18U
DOB: 12.09.2017		C MISS PLATINUM 8039 ET
Polled Hereford	C STARBURST 4029 ET	NJW 98S R117 RIBEYE 88X ET
Spring Pair		HHR PAY IN GOLD 1008X ET

EPD's CE: 4.1 BW: 3.1 WW: 48 YW: 79 MILK: 32 REA: 0.51 MARB: 0.14

- AI bred 05.07.2021 to H The Profit 8426 ET.
- This sharp made female has a great look with added shape and power.
- She is sired by Generation X which was built on a strong maternal base, and her dam, 4029, is one of the best donors we own. 4029 is phenotypically impressive, and when you study her pedigree it is equally impressive.
- As you can see by the calf at her side this female is a producer.
- Her dam is a full sister to C Candy Cane 4030 the former Polled National Champion Female and highly proven donor in the Colyer program.
- Ranks in the top 10% for MM; top 15% for UDDR, TEAT, REA, CHB.
- **LOT 10A - AHA# 44238461 - April 3rd heifer by H The Profit 8426 ET.**

C Starburst 4029, dam of Lot 10 and selling as Lot 47.



LOT 11

11

WR LBB MS TANKERAY 606D

Reg # 43717829	WORR OWEN TANKERAY Y79D ET	NJW FHF 9710 TANK 45P
DOB: 04.19.2016		BR KLD ROSE MARIE D79 ET
Polled Hereford	WRB DELHAWK KARMA	AH JDH CRACKER JACK 26U ET
Spring Pair		WRB ELIZABETH 3T

EPD's CE: 3.3 BW: 1.9 WW: 50 YW: 82 MILK: 23 REA: 0.41 MARB: 0.11

- AI bred 05.07.2021 to SR Dominate 308F.
- This heavily pigmented Tankeray daughter is a great looking female equipped with power and quality. She has done an awesome job and had a heifer calf in our 2019 Fall Premier Sale. She has an impressive bull calf at side sired by Adventure.
- Ranks in the top 20% for MM; top 25% for CW.
- **LOT 11A - AHA# 44238463 - March 2nd bull by ECR 3116 Adventure 7647 ET**

Daughter of Lot 11.



12 BK BLIPPY 4105B ET

Reg # 43639865	NJW 98S R117 RIBEYE 88X ET	SHF RIB EYE M326 R117
DOB: 08.20.2014		NJW 9126J DEW DOMINO 98S
Horned Hereford	HH MISS ADVANCE 0144X ET	HH ADVANCE 4055P
Spring Pair		HH MISS ADVANCE 4012P ET

EPD's CE: 5.6 BW: 2.4 WW: 52 YW: 80 MILK: 26 REA: 0.30 MARB: 0.24

- AI bred 05.07.2021 to BK BH Fast Ball ET.
- This female has been one of the favorites at the ranch all her life. She is moderate framed, short marked, easy fleshing, and a great producer.
- She has produced three powerful herd sires and one daughter which is in our replacement pen.
- Average progeny ratio 2@101.5 for WW. Ranks in the top 2% for TEAT, BMI, BII; top 4% for UDDR; top 10% for MARB; top 20% for CED, CHB.
- **LOT 12A - AHA# 44238464 - March 7th heifer by C KRC 1008X Miles 4288 ET.**



13 BK HH CLEAR ROADS 5106C ET

Reg # 43640959	NJW 98S R117 RIBEYE 88X ET	SHF RIB EYE M326 R117
DOB: 03.21.2015		NJW 9126J DEW DOMINO 98S
Horned Hereford	CHURCHILL LADY 0230X ET	GOLDEN OAK OUTCROSS 18U
Spring Pair		DCC 8006 PATTI 4266 ET

EPD's CE: 0.1 BW: 4.1 WW: 48 YW: 80 MILK: 22 REA: 0.49 MARB: 0.21

- AI bred 05.07.2021 to BK BH Fast Ball ET.
- Here is an 88X daughter out of Churchill Lady 0230X the 2012 National Western Grand Champion Horned Female.
- 0230X is a full sister to 1162Y the dam of SR Dominate.
- Ranks in the top 4% for BMI; top 5% for BII, CHB; top 15% for UDDR, TEAT, MARB; top 20% for REA.
- **LOT 13A - AHA# 44238465 - March 5th heifer by C KRC 1008X Miles 4288 ET.**



14 KCL WB 88X MS ADVANCE 211B ET

Reg # 43626676	NJW 98S R117 RIBEYE 88X ET	SHF RIB EYE M326 R117
DOB: 02.02.2014		NJW 9126J DEW DOMINO 98S
Polled Hereford	GO MS 7195 ADVANCE W9	HH ADVANCE 7195T
Spring Pair		GO MS L18 EXCEL T63

EPD's CE: 5.3 BW: 2.3 WW: 52 YW: 79 MILK: 30 REA: 0.35 MARB: 0.26

- AI bred 05.07.2021 to SR Dominate 3008F.
- Pay attention here! This is an awesome pair with big time earning potential. 4211 is sired by the immortal 88X and she has a stellar heifer calf at her side by the SR Dominate who was crowned Grand Champion Horned Bull & Supreme Champion Hereford at the '20 NWSS.
- These kind are hard to let go, they will both make lots of money down the road.
- Ranks in the top 2% for BMI, BII; top 10% for TEAT, MARB; top 15% for MM, UDDR; top 20% for CED, CHB.
- **LOT 14A - AHA# 44238466 - February 20th heifer by SR Dominate 308F ET.**





HAPP Kool Aid Points 1218,
dam of Lot 15 & 16.

LOT 15

15 BK COOL TRICK 5705C ET

Reg # 43672617	NJW 98S R117 RIBEYE 88X ET	SHF RIB EYE M326 R117
DOB: 10.06.2015		NJW 9126J DEW DOMINO 98S
Horned Hereford	HAPP KOOL AID POINTS 1218 ET	DELHAWK KAHUNA 1009 ET
Spring Pair		CRANE STYLE POINTS 945

EPD's CE: 5.9 BW: 1.6 WW: 54 YW: 85 MILK: 25 REA: 0.56 MARB: 0.19

- AI bred 05.07.2021 to SR Dominate 3008F.
- Here is a great breeding piece, sired by 88X out of Kool Aid Points. She is a full sister to the 2018 National Western Grand Champion Horned Female exhibited by Rebecca Moore. These Kool Aid daughters don't miss and with this female's solid EPD profile it opens up the options at breeding time.
- She has raised two herd bulls, one was in our online sale last spring, and one heifer that is in our replacement pen.
- Pay close attention to the herd bull she has at her side sired by SR Dominate.
- Average progeny ratio 3@95.7 for BW. Ranks in the top 2% for BII; top 10% for REA; top 15% for MARB, BMI; top 20% for CED, BW; top 25% for CHB.
- **LOT 15A - AHA# 44238468 - February 6th heifer by SR Dominate 308F ET.**



LOT 16

16 BK COOL DOWN 5706C ET

Reg # 43672620	NJW 98S R117 RIBEYE 88X ET	SHF RIB EYE M326 R117
DOB: 10.06.2015		NJW 9126J DEW DOMINO 98S
Horned Hereford	HAPP KOOL AID POINTS 1218 ET	DELHAWK KAHUNA 1009 ET
Spring Pair		CRANE STYLE POINTS 945

EPD's CE: 6.1 BW: 1.8 WW: 54 YW: 86 MILK: 25 REA: 0.56 MARB: 0.18

- AI bred 05.07.2021 to SR Dominate 308F.
- These 88X daughters out of Kool Aid Points 1218 are hard to let go of, they need to be in the donor pen because they don't miss. I love the color pattern, pigment, and femininity this striking Kool Aid Points 1218 daughter displays.
- The Kool Aid daughters have proven they raise the great ones! Eight Kool Aid granddaughters sold in our 2021 Spring Edition Sale for a \$18,325 average.
- Ranks in the top 10% for REA; top 15% for MARb, BMI, BII; top 20% for CED, BW; top 25% for CHB.
- **LOT 16A - AHA# 44238471 - February 5th heifer by C KRC 1008X Miles 4288.**



LOT 17

17 BK DELIGHT 6120D

Reg # 43745528	H L1 DOMINO 3053 ET	CL 1 DOMINO 955W
DOB: 01.25.2016		HH MISS ADVANCE 5139R ET
Polled Hereford	DELHAWK JULES 22B ET	AH JDH CRACKER JACK 26U ET
Spring Pair		DELHAWK WHISPER 1012 ET

EPD's CE: 4.3 BW: 1.8 WW: 50 YW: 83 MILK: 23 REA: 0.47 MARB: 0.04

- AI bred 05.07.2021 to SR Dominate 308F.
- This is the only 3053 daughter we own, but she is just what you would expect with his pedigree. 3053 was the feature herd bull in the 2014 Hoffman Ranch sale commanding \$62,000 and is a direct son of the \$175,000 5139R that is currently serving as a donor in the Sierra Ranches program in California. 6120 is attractive made, good structured, well balanced and is flat out a producer. Study her numbers as her high CED and moderate BW allow many mating options on this elite bred female.
- She produced a really nice Valor daughter that we sold in the Fall Premier Sale. She has a bull at side sired by SR Dominate.
- Average progeny Ratios 2@95.5 for BW and 1@103 for WW. Ranks in the top 20% for REA; top 25% for BW, CW.
- **LOT 17A - AHA# 44238472 - February 2nd bull by SR Dominate 308F ET.**

Daughter of Lot 17.

18 WSCC IMA 68F ET

Reg # 43957510 NJW 98S R117 RIBEYE 88X ET SHF RIB EYE M326 R117
 DOB: 04.15.2018 NJW 9126J DEW DOMINO 98S
 Polled Hereford CRR ABOUT TIME 743
 Spring Pair SULL TCC MS HARLEY 312 ET LCC TWO TIMIN 438 ET

EPD's CE: 6.6 BW: 1.2 WW: 49 YW: 76 MILK: 25 REA: 0.47 MARB: 0.17

- AI bred 05.07.2021 to SR Dominate 308F.
- Here is sharp built red eyed 88X daughter out of a powerfully designed direct daughter of "Two Timin" better known as Harley who has produced several National Champions and countless high sellers.
- Her first daughter is in our replacement females. Don't miss this good looking Fast Ball bull calf at her side.
- Average progeny ratio 1@74 for BW.
- Ranks in the top 5% for UDDR; top 10% for TEAT, BMI, BII; top 15% for CED, BW, CHB; top 20% for REA, MARB.
- **LOT 18A - AHA# 44238473 - March 1st bull by BK BH Fast Ball ET.**



LOT 18

19 /S LADY BOOM TOWN 7237E

Reg # 43776415 NJW 73S W18 HOMETOWN 10Y ET
 DOB: 02.16.2017 /S JBB/AL BOOM TOWN 44608 /S LADY THOR 1271Y
 Horned Hereford SHF RIB EYE M326 R117
 Spring Pair /S RRC R117 MISSY 4201 CB 44U 2U LITTLE MISSY 4Y

EPD's CE: 6.9 BW: 1.6 WW: 58 YW: 86 MILK: 36 REA: 0.45 MARB: 0.32

- AI bred 05.07.2021 to SR Dominate 308F.
- This female came to us on the side of her dam from the Shaw operation in Idaho. She was the selling point for us when we made that purchase, sired by Boom Town with a powerful maternal base.
- This heavily pigmented female is short marked and well designed.
- Elite EPD profile that covers all phases, calving-ease, performance, maternal strength and valued added carcass merit.
- Take a look at the bull calf at her side, he will make a herd sire.
- Ranks in the top 3% for MM; top 4% for MARB; top 10% for BMI, BII, CHB; top 15% for CED, UDDR, TEAT; top 20% for BW, WW; top 25% for REA.
- **LOT 19A - AHA# 44238474 - February 21st bull by H The Profit 8426 ET.**



LOT 19

20 BK DISCREET 6144D

Reg # 43745530 TH 89T 743 UNTAPPED 425X ET
 DOB: 03.01.2016 BK WF APACHE A28 BLACKTOP VICKY 028 ET
 Polled Hereford HYALITE ON TARGET 939
 Spring Pair /S LADY ON TARGET 4184B /S LADY DOMINO 0312X

EPD's CE: 2.9 BW: 2.2 WW: 57 YW: 88 MILK: 26 REA: 0.42 MARB: 0.06

- AI bred 05.07.2021 to SR Dominate 308F.
- This sharp made female is sired by BK Apache A28, a direct son of Blacktop Vicky, and out of 4184 which was a great female from the Shaw program. Study her heifer calf sired by Dominate as she has the makings of a real high quality female that will be something to see this fall.
- She produced a powerful female in 2019 sired by Valor that Austin Breeding purchased in the Fall Premier Sale and showed successfully.
- She has another great prospect at her side by SR Dominate.
- Average progeny ratios 3@95 for BW and 1@107 for WW. Ranks in the top 20% for WW.
- **LOT 20A - AHA# 44238475 - February 7th heifer by SR Dominate 308F.**



LOT 20



LOT 20A



Daughter of Lot 20.



BK BH Fast Ball F102 ET,
sire of Lots 21A & 22B.



LOT 21

21 CMCC DAZZLER 649D

Reg # 43732037	BK WF APACHE A28	TH 89T 743 UNTAPPED 425X ET
DOB: 04.02.2016		BLACKTOP VICKY 028 ET
Polled Hereford	HAPP BONUS POINTS 2B ET	NJW 98S R117 RIBEYE 88X ET
Spring Pair		CRANE STYLE POINTS 945

EPD's CE: 4.1 BW: 3.1 WW: 48 YW: 79 MILK: 32 REA: 0.51 MARB: 0.14

- AI bred 05.07.2021 to SR Dominate 308F.
- Here is a striking young female with a bright future.
- She is sired by BK Apache which is backed by the great Black Top Vicky and her dam is sired by 88X out of CRANE Style Points which is also the dam of Kool Aid Points. Her pedigree is rich and deep.
- Study her bull calf at side, he's a stud!!!
- Ranks in the top 25% for BW.
- **LOT 21A - AHA# 44238476 - March 2nd heifer by BK BH Fast Ball F102 ET**

22 BK EMBERS 7117E

Reg # 43910026	CHURCHILL SENSATION 028X	UPS DOMINO 3027
DOB: 01.26.2017		CHURCHILL LADY 7202 ET
Horned Hereford	BK BAKING TIME 4115B ET	RST TIMES A WASTIN 0124
Spring Pair		HH MISS ADVANCE 4190P

EPD's CE: 3.7 BW: 0.8 WW: 53 YW: 77 MILK: 35 REA: 0.41 MARB: 0.05

- AI bred 05.07.2021 to H The Profit 8426 ET.
- Sensation 028X was our go to heifer bull for a few years, they were born small, had a great look, and they have made awesome cows. 7117 is a gorgeous female with a beautiful udder. Just look at the bone, body, front 1/3 and udder quality she has.
- Her dam is sired by National Champion Times A Wastin and out of 4190 which was a great Holden donor we had in our ET program.
- These Fast Ball calves are impressive to say the least.
- Average progeny ratio 1@107 for WW. Ranks in the top 2% for BMI; top 3% for BW; top 4% for MM; top 10% for BW, TEAT; top 15% for UDDR.
- **LOT 22A - AHA# 44238477 - March 4th heifer by BK BH Fast Ball F102 ET.**



LOT 22

23 BK EMBLAZE 7122E

Reg # 43935759	CHURCHILL SENSATION 028X	UPS DOMINO 3027
DOB: 02.08.2017		CHURCHILL LADY 7202 ET
Horned Hereford	BK CAB LADY 5110C ET	RST TIMES A WASTIN 0124
Spring Pair		HH MISS ADVANCE 4190P

EPD's CE: 1.0 BW: 2.5 WW: 54 YW: 87 MILK: 60 REA: 0.38 MARB: 0.01

- AI bred 05.07.2021 to H The Profit 8426 ET.
- We have retained several of these Sensation 028 daughters the past few years, these females make great cows and are out of our very best females.
- Her dam is by Times A Wastin which was a premier sire and a popular champion. Her granddam, 4190, was one of our original purchases in the Hereford breed. 4190 not only produced top herd sires and donors, she was still in production at fifteen-years-old.
- A huge bodied female with added dimension, balance and style.
- Average progeny ratio 1@101 for WW. Ranks in the 2% for BMI; top 3% for BII; top 10% for MM; top 15% for UDDR, TEAT.
- **LOT 23A - February 11th heifer by JDH AH Standout 16G**



LOT 23

24 BK EVEY 7119E

Reg # 43910027 UPS DOMINO 3027
 DOB: 02.09.2017 CHURCHILL SENSATION 028X CHURCHILL LADY 7202 ET
 Polled Hereford BK COOL BEANS 5103C ET KCL WPF THE PROFESSOR 7110ET
 Spring Pair HAPP KOOL AID POINTS 1218 ET

EPD's CE: 8.8 BW: -0.6 WW: 53 YW: 74 MILK: 33 REA: 0.56 MARB: 0.11

- AI bred 05.07.2021 to H The Profit 8246 ET.
- Sensation 028 has covered the country with elite herd bulls and females. We loved them as calves, but when they went into production is when we knew we were on the right track.
- Her dam is sired by The Professor which was a powerful sire that added performance and shape. Her granddam is Kool Aid Points so she has quality and power deep in her pedigree.
- Her heifer calf has loads of potential, not only in the show ring, but with the genetics she brings to the table as well. We were extremely impressed last year with our first Adventure calves so we bred several to him last year.
- Check out the calving-ease, Milk, REA combine with her TEAT and UDDR scores. Ranks in the top 2% for BMI, BII; top 3% for BW; top 10% for CED, NN, TEAT, REA; top 15% for UDDR.
- **LOT 24A - AHA# 44238478 - March 8th heifer by ECR 3116 Adventure 7647 ET.**



LOT 24

25 CCF 4100 PRINCESS KATE 6105

Reg # 43720797 NJW 98S R117 RIBEYE 88X ET
 DOB: 05.08.2016 BF 88X RICHIE 4100 ET CSF BR GOLDBREIL 7902 ET
 Polled Hereford LPH KEYLIME L 1066 Y305 LPH KEYNOTE 20X L 1066 ET
 Spring Pair DS GPR 606 LADY 5R ET

EPD's CE: 6.9 BW: 1.6 WW: 58 YW: 86 MILK: 36 REA: 0.45 MARB: 0.32

- AI bred 05.07.2021 to SR Dominate 308F.
- Here is an elite female that has a powerful pedigree. Her sire is a direct son of the immortal 7902 the full sister to BR Gabriel 5082 the most influential donor in the Barber Ranch program. On the bottom side, she stems back to the powerful Keynote and the maternal legend P606.
- It will be fun to watch this female in the future, she has a great prospect at her side with a world of potential.
- Ranks in the top 10% for REA; top 25% for MM, CHB.
- **LOT 25A - March 2nd heifer by BK BH Fast Ball F102 ET**



SR Dominate 308F, service sire to Lots 25 & 26.

26 BK DAVA 6103DET

Reg # 43745507 TH 122 711 VICTOR 719T
 DOB: 02.05.2016 CRR 719 CATAPULT 109 CRR 4037 ECLIPSE 808
 Polled Hereford BK H YAHTZEE 1088 CRR ABOUT TIME 743
 Spring Pair NJW 78P 63N LADYSPORT 51W ET

EPD's CE: -2.6 BW: 4.4 WW: 60 YW: 97 MILK: 28 REA: 0.48 MARB: -0.18

- AI bred 05.07.2021 to SR Dominate 308F.
- This top female is sired by breed leader Catapult and out of Yahtzee, a female that was in our donor line up for several years. Yahtzee produced several top sellers and is the dam to many proven donors. She is backed by now deceased immortal 51W.
- If you are looking for a power donor that traces back to one of the influential lines in our program take a good look here.
- When you study her heifer calf sired by the resident herd sire, Standout, that we purchased from the Delaney/Atkins program in the 2020 Mile High Sale, you will see what I am talking about when it comes to stemming from a proven cow family. Her heifer calf is flat out good!
- Ranks in the top 15% for WW, YW; top 20% for MM, REA; top 25% for CW.
- **LOT 26A - February 8th bull by JDH AH Standout 16G**



LOT 26



LOT 26A



27

BK FAVORS VICKY 8103F

Reg # 43964707 CRR 719 CATAPULT 109
 DOB: 01.08.2018 CRR 109 CATAPULT 322 CRR 713 KELLY 0117
 Polled Hereford BR MOLER ET
 Spring Pair BLACKTOP VICKY 028 ET SSF VICKY 631

EPD's CE: 1.0 BW: 23 WW: 53 YW: 87 MILK: 26
 REA: 0.41 MARB: -0.10

- AI bred 05.07.2021 to SR Dominate 308F.
- These young females that are stacked with proven genetics aren't available everyday. Sired by Catapult and out of Blacktop Vicky, which has produced multiple National Champions, she is the right kind.
- Her heifer calf is sired by Adventure, which we purchased from the Fawcett program in South Dakota, his calves are extremely impressive.
- Stout in her design with elite balance and structure.
- Elite genetic package that combines 2296 and Blacktop Vicky.
- Ranks in the top 15% for TEAT.
- **LOT 27A - AHA# 44238479 - March 4th heifer by ECR 3116 Adventure 7647 ET.**



LOT 27

Blacktop Vicky 028 ET, dam of Lot 27.



LOT 28



LOT 29

28 BK EASY TRAVELER 7539E

Reg # 43954358 RST TIMES A WASTIN 0124
 DOB: 08.30.2017 LCC FBF TIME TRAVELER 480 JB REMETEE 213
 Polled Hereford NJW 98S R117 RIBEYE 88X ET
 Spring Pair BK BAT GIRL 4112B ET HH MISS ADVANCE 4190P

EPD's CE: 1.8 BW: 3.1 WW: 52 YW: 85 MILK: 27 REA: 0.45 MARB: 0.07

- AI bred 05.07.2021 to H The Profit 8426 ET.
- She is sired by former National Western Grand Champion Polled Bull Time Traveler and out of an 88X daughter than I am a huge fan of.
- This female has the added length, body, and design. Check out her heifer calf sired by Denver Champion H The Profit.
- Average progeny ratio 1@95 for BW.
- Ranks in the top 20% for CHB; top 25% for MM, REA.
- **LOT 28A - AHA# 44238480 - February 11th heifer by H The Profit 8426 ET.**

29 BK EXCITING SPIN 7528E

Reg # 43955523 NJW 79Z 22Z MIGHTY 49C ET NJW 67U 28M BIG MAX 22Z
 DOB: 09.02.2017 BK BRAIN SPIN 401B BW 91H 100W RITA 79Z ET
 Horned Hereford LCX UNLEASHED KEEPSAKE 1110 ET
 Spring Pair HAPP KOOL AID POINTS 1218 ET

EPD's CE: 8.2 BW: 1.0 WW: 54 YW: 90 MILK: 23 REA: 0.47 MARB: 0.11

- AI bred 05.07.2021 to H The Profit 8426 ET.
- This Mighty daughter is an exciting young female that is loaded up with genetics and good looks.
- Her dam, BK Brain Spin 401, was the first natural calf out of the great Kool Aid Points. She has produced top sellers and champions along with this future donor.
- Study the balance, shape, chest floor, length of neck, and overall presence this beast displays. She is very striking!
- Elite EPD profile across the board.
- Ranks in the top 10% for CED, BW; top 20% for REA; top 25% for CHB
- **LOT 29A - February 11th heifer by JDH AH Standout 16G**

30 BK EARLY BELL 7112E

Reg # 43834937 NJW 67U 28M BIG MAX 22Z
 DOB: 03.14.2017 NJW 79Z 22Z MIGHTY 49C ET
 Horned Hereford BW 91H 100W RITA 79Z ET
 Spring Pair CRR ABOUT TIME 743
 BK HH BELL HOP 406B ET
 CHURCHILL LADY 0230X ET

EPD's CE: 3.0 BW: 2.7 WW: 54 YW: 81 MILK: 25
 REA: 0.52 MARB: 0.06

- AI bred 05.07.2021 to SR Dominate 308F.
- These Mighty daughters are special, they are true brood cows that work hard and look good doing it.
- Her dam is a killer looking female which is backed by the powerful Outcross sired dam 0230X.
- She has a stout bull calf at her side sired by Standout.
- Average progeny ratios 2@96.0 for BW and 1@110 for WW. Ranks in the top 15% for REA, BMI, BII.
- **LOT 30A - February 8th bull by JDH AH Standout 16G**



31 VC FIONA 8106R

Reg # 44117587 CHURCHILL SENSATION 028X
 DOB: 03.03.2018 UPS SENSATION 2296 ET
 Polled Hereford UPS JT MISS NEON 7811 1ET
 Spring Pair BK LH CASHMERE 5101 ET
 BLACKTOP VICKY 028 ET

EPD's CE: 4.2 BW: 2.6 WW: 56 YW: 89 MILK: 31 REA: 0.53 MARB: -0.02

- AI bred 05.07.2021 to SR Dominate 308F.
- Sired by the popular 2296 who has sired more champions in the Hereford arena than any other sire the past few years.
- Her dam, 5101, is a Blacktop Vicky daughter that Victoria Chapman showed very successfully.
- I really like the look and levelness of hip this young female possesses.
- This is a powerful young female with an elite genetic make-up.
- Ranks in the top 10% for MM; top 15% for UDDR, TEAT, REA.
- **LOT 31A - March 7th heifer by C KRC 10008X Miles 4288 ET.**



32 EXR PRINCESS 6139 ET

Reg # 43662426 SHF LITERAL W18 Y90
 DOB: 01.17.2016 SHF ACCESS Y90 A 216
 Horned Hereford SHF MISTY 33T Y35
 Spring Pair GV CMR MS 424 167S Y122ET
 ALH 034 PLATO DOM 0424
 JWR M41 PRINCESS 167S

EPD's CE: 2.4 BW: 3.3 WW: 49 YW: 71 MILK: 21 REA: 0.11 MARB: 0.33

- AI bred 05.07.2021 to H The Profit 8426 ET.
- Here is a deep sided, attractive in her design, well structured female. Her dam is a direct daughter of 167S the former donor for Loewen Herefords and Sandhill Farms.
- She has a powerful herd bull at side sired by the exciting herd sire JDH AH Standout.
- Ranks in the top 4% for MARB.
- **LOT 32A - February 11th bull by JDH AH Standout 16G**



LOT 33

33 /S LADY SENSATION 8128F

Reg # 43891803 CHURCHILL SENSATION 028X
 DOB: 02.04.2018 UPS SENSATION 2504 ET
 Polled Hereford NJW BW LADYSPORT DEW 78P ET
 Spring Pair THR THOR 4029
 /S LADY THOR 4086B
 /S LADY RIBEYE 111Y

EPD's CE: 6.8 BW: 0.3 WW: 53 YW: 82 MILK: 30
 REA: 0.57 MARB: 0.05

- AI bred 05.07.2021 to SR Dominate 308F.
- Here is a really complete female sired by 2504 the 028 son out of the breed legend donor 78P.
- Her dam is an impressive Thor daughter from our ET program that sells as Lot 57.
- A beautiful udder and built right from the ground up.
- Ranks in the top 4% for UDDR; top 10% for BW, TEAT, REA; top 15% for CED, MM.
- **LOT 33A - February 8th bull by JDH AH Standout 16G.**



LOT 34



BK Fixation,
son of Lot 34.



LOT 35



Maternal sister to Lot 35.

34 BK CLASS CLOWN 5113C ET

Reg # 43640964 CRR ABOUT TIME 743
 DOB: 03.20.2015 RST TIMES A WASTIN 0124 RST MS 1000 BLAZER 2029
 Polled Hereford TH JWR SOP 16G 57G TUNDRA 63N
 Spring Pair NJW 78P 63N LADYSPORT 51W ET
 NJW BW LADYSPORT DEW 78P ET

EPD's CE: -0.4 BW: 3.5 WW: 52 YW: 94 MILK: 15 REA: 0.44 MARB: -0.15

- AI bred 05.07.2021 to H The Profit 8426 ET.
- This power female not only is stunning to look at, she is just as elite on paper. She is sired by former National Champion Times A Wastin and out of 51W which was a two-time National Champion. The now deceased 51W was incredible and her daughters have been just as special in production.
- 5113 is the dam of BK Fixation which won his division in Denver and has made a top herd sire.
- Ranks in the top 15% for UDDR, TEAT; top 20% for YW; top 25% for REA.
- **LOT 34A - March 2nd bull by H The Profit 8426 ET.**

35 BK FLAWLESS SWEETS 8102F ET

Reg # 44010409 TH 122 711 VICTOR 719T
 DOB: 01.03.2018 CRR 719 CATAPULT 109 CRR 4037 ECLIPSE 808
 Polled Hereford AH JDH CRACKER JACK 26U ET
 Spring Pair HAPP SWEET ANNIE 4A ET
 MCR PPF MISS GOLD DOM 206 ET

EPD's CE: 2.6 BW: 3.6 WW: 60 YW: 96 MILK: 31 REA: 0.52 MARB: -0.01

- AI bred 05.07.2021 to SR Dominate 308F.
- Here is a powerful young female that will be very popular on sale day. She is young and not as mature but study her build and her pedigree.
- The Sweet Annie daughters have been the keys to the success in our program. The top selling female in our 2021 Spring Edition Sale was out of her and she sold for \$95,000.
- Young and built right this female has genetic power to be a big time producer.
- Ranks in the top 10% for MM; top 15% for WW, YW, REA; top 20% for CW.
- **LOT 35A - February 20th heifer by JDH AH Standout 16G**

36 BK EARLY GIRL 7110E ET

Reg # 43852082 HAPP EXTRA POINT 1220 ET
 DOB: 03.06.2017 HAPP BK VALOR 37C ET
 Horned Hereford JSF 12N LADY VAL 9T
 Spring Pair AH JDH CRACKER JACK 26U ET
 HAPP SWEET ANNIE 4A ET
 MCR PPF MISS GOLD DOM 206 ET

EPD's CE: 2.9 BW: 2.9 WW: 62 YW: 95 MILK: 25
 REA: 0.66 MARB: 0.10

- AI bred 05.07.2021 to SR Dominate 308F.
- Here is an own daughter of Sweet Annie that is built awesome; square hipped, deep sided, stout featured, and moderate..
- We love the Valor females and they are great in production.
- This is an outstanding young donor female with a powerful Standout son at her side.
- Ranks in the top 2% for CW; top 4% for REA; top 10% for WW, CHB; top 15% for YW.
- **LOT 36A - February 6th bull by JDH AH Standout 16G**



LOT 36

HAPP Sweet Annie 4A ET, dam of Lot 35 & 36.



LOT 37

C Starburst 4029, dam of Lot 37, selling as Lot 47



LOT 38

37 BK FULL OF STARS 8164F ET

Reg # 44003933 HAPP BK VALOR 37C ET HAPP EXTRA POINT 1220 ET
 DOB: 1.11.2018 JSF 12N LADY VAL 9T
 Polled Hereford NJW 98S R117 RIBEYE 88X ET
 Spring Pair C STARBURST 4029 ET HHR PAY IN GOLD 1008X ET

EPD's CE: 2.4 BW: 2.4 WW: 58 YW: 88 MILK: 26 REA: 0.63 MARB: 0.15

- AI bred 05.07.2021 to H The Profit 8426 ET.
- We have had a few of these full sisters and they were popular as show prospects and sold very well. Those we kept for replacements have not disappointed us one bit. With the cow power behind this great female she is going to be a huge asset to any progressive operation.
- Her dam, 4029, selling as Lot 47, is the full sister to C Candy Cane has been a top tier donor in our program and we feel this set of genetics will pay dividends.
- 8164 is a big footed power female with a really cool look.
- Average progeny ratio 1@96 for BW. Ranks in the top 5% for REA; top 10% for CW; top 15% for CHB; top 25% for MARB.
- **LOT 37A - March 8th bull by H The Profit 8426 ET.**

38 BK FLAVORED CABERNET 8162 ET

Reg # 44003931 HAPP BK VALOR 37C ET HAPP EXTRA POINT 1220 ET
 DOB: 02.19.2018 JSF 12N LADY VAL 9T
 Horned Hereford H WCC/WB 668 WYARNO 9500 ET
 Spring Pair H CHEZ CABERNET 462B ET R SWEET RED WINE 039

EPD's CE: 3.4 BW: 1.1 WW: 54 YW: 83 MILK: 24 REA: 0.56 MARB: 0.12

- AI bred 05.07.2021 to H The Profit 8426 ET.
- Don't overlook these younger females that are a little thin. This is a great female with worlds of look, power, and substance.
- She is sired by the proven Valor, out of 462B which is a full sister to the great sire of champions Full Throttle.
- Very striking on the profile, super correct in her lines and will in time be a stout designed individual.
- This young female traces back to both 9T and Sweet Red Wine. What a genetic gem!
- Ranks in the top 10% for CW, REA; top 15% for BW; top 25% for CHB.
- **LOT 38A - AHA# 44238481 - March 2nd heifer by ECR 3116 Adventure 7647.**



39

BK FINDING PERFECTION 8156F

Reg # 44003925	LCX PERFECTO 11B ET	NJW 98S R117 RIBEYE 88X ET
DOB: 02.06.2018		WLL ZOEY 3Z
Polled Hereford	HH MISS ADVANCE 0026X	HH ADVANCE 7034T
Spring Pair		HH MISS ADVANCE 8064U ET

EPD's CE: 3.4 BW: 3.4 WW: 59 YW: 91 MILK: 28 REA: 0.39 MARB: -0.11

- AI bred 05.07.2021 to SR Dominate 308F.
- Perfecto has been a huge asset to our program. We first used him on heifers, then after we saw the calves we used him on cows and in our ET program. He has a strong maternal backing and produced our kind of females.
- Her dam is a Holden female with a perfect udder and puts the power in her offspring.
- Dark red in color and short marked makes this young female even that more attractive. A big time female with a big time genetic lineage stacked in her pedigree.
- Ranks in the top 10% for TEAT; top 15% for WW, UDDR, BMI, BII; top 20% for MM; top 25% for YW.
- **LOT 39A - AHA# 44238482 - February 12th heifer by SR Dominate 308F ET.**



40

BK ESSENCE 7107E ET

Reg # 43908246	NJW 73S W18 HOMETOWN 10Y ET	SHE WONDER M326 W18 ET
DOB: 03.08.2017		NJW P606 72N DAYDREAM 73S
Polled Hereford	H CHEZ CABERNET 462B ET	H WCC/WB 668 WYARNO 9500 ET
Spring Pair		R SWEET RED WINE 039

EPD's CE: 6.8 BW: 1.2 WW: 52 YW: 85 MILK: 33 REA: 0.48 MARB: 0.20

- AI bred 05.07.2021 to H The Profit 8426 ET.
- Here is a young female that comes to you a little thin at picture time but study this female, she will be a powerful mature cow. Actually, the best thing to study is her heifer calf at side and you will see what kind of production piece we have here. Her dam is a direct daughter of Sweet Red Wine the infamous donor that has produced Champions and high sellers across the country.
- Her dam is a full sister to the premier herd sire Full Throttle and was Reserve Champion Female at the 2015 JNHE.
- Check out her EPD as she is solid across the board. Average progeny ratios 2@96 for BW, 1@109 for WW. Ranks in the top 10% for MM, BMI, BII; top 15% for CED, BW, MARB, CHB; top 20% for REA; top 25% for CW."
- **LOT 40A - AHA# 44238483 - March 2nd heifer by ECR 3116 Adventure 7647 ET.**

H CHEZ Cabernet 462B ET,
dam of Lot 40.



41 BK COOL BEANS 5103C ET

Reg # 43639899 TH 71U 719T MR HEREFORD 11X
 DOB: 03.19.2015 KCL WPF THE PROFESSOR 7110ET
 Polled Hereford KCL 29R MARY ANNE 23G 5R ET
 Spring Pair HAPP KOOL AID POINTS 1218 ET
 DELHAWK KAHUNA 1009 ET
 CRANE STYLE POINTS 945

EPD's CE: 1.5 BW: 3.2 WW: 54 YW: 89 MILK: 20 REA: 0.56 MARB: -0.11

- AI bred 05.07.2021 to H The Profit 8426 ET.
- We don't have many of these Professor daughters but they are producers. This female is a direct daughter of the immortal donor and former National Champion Female Happ Kool Aid Points 1218.
- 5103 is very unique in her design with a big square hip and ultra cool look.
- She is out of HAPP Kool Aid Points and that only adds more consistency to her pedigree.
- Average progeny ratio 3@99.3 for BW. Ranks in the top 10% for REA.
- **LOT 41A - AHA# 44238484 - March 17th heifer by C KRC 1008X Miles 4288 ET.**



LOT 41

42 VC DEB 6127D

Reg # 44117906 TH 71U 719T MR HEREFORD 11X
 DOB: 01.25.2016 KCL WPF THE PROFESSOR 7110ET
 Polled Hereford KCL 29R MARY ANNE 23G 5R ET
 Spring Pair BK KKH SSF A HOTTIE 355
 MSU TCF REVOLUTION 4R
 STAR KKH SSF A HOT KESS 12Y ET

EPD's CE: -0.5 BW: 4.2 WW: 58 YW: 93 MILK: 21 REA: 58 MARB: -0.09

- AI bred 05.07.2021 to H The Profit 8426 ET.
- This Professor daughter has been an elite producer from her first calf on. She will definitely out produce herself, she has had two heifers that have shown successfully.
- She has the pieces and puts them together quite nicely. She will add look and design to her progeny.
- Average progeny ratio 1@102 for WW. Ranks in the top 10% for REA; top 20% for WW, YW.
- **LOT 42A - March 2nd bull by H The Profit 8426 ET.**



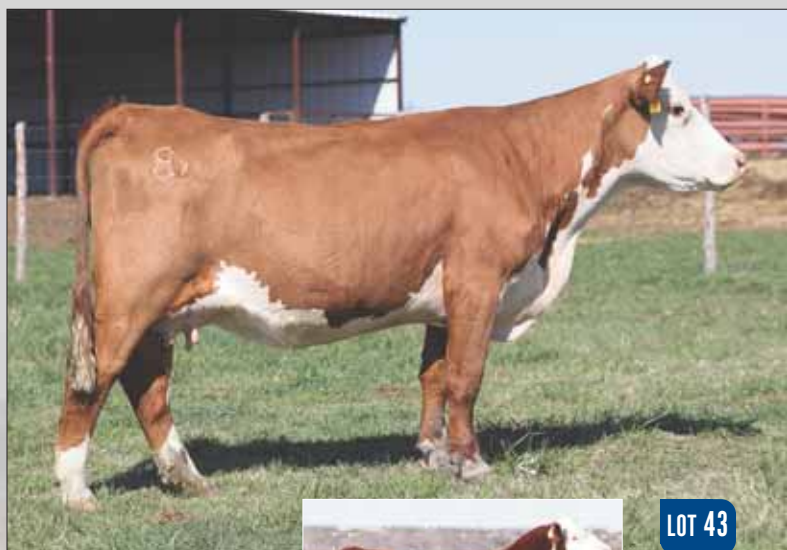
LOT 42

43 BK FOREVER VICKY 8135F ET

Reg # 4403838 H FHF AUTHORITY 6026 ET
 DOB: 01.22.2018 PYRAMID 16W 110T 9116
 Polled Hereford FHF 408 RITA 21W
 Spring Pair BLACKTOP VICKY 028 ET
 BR MOLER ET
 SSF VICKY 631

EPD's CE: -0.8 BW: 3.8 WW: 56 YW: 94 MILK: 25 REA: 0.43 MARB: -0.04

- AI bred 05.07.2021 to SR Dominate 308F.
- Here is a really good female with a stellar pedigree. She is sired by Authority which is backed by two awesome cow families, her dam is Blacktop Vicky which was Champion in Louisville and Reserve two times in Denver. Vicky has since produced many show champions including Hereford Junior Nationals.
- She has a heifer calf at side by Dominate, this will be fun!
- The young females are a little greener at picture time as expected but once these girls get to rocking they are going to be an impressive set of producing females.
- Average progeny ratio 1@98 for BW. Ranks in the top 15% for YW; top 25% for WW, REA.
- **LOT 43A - AHA# 44238486 - February 11th heifer by SR Dominate 308F ET.**



LOT 43



H FHF Authority 6026 ET,
sire of Lot 43.



LOT 44

44 BK FLYING STAR 8133F ET

Reg # 44003836 PYRAMID 16W 110T 9116
 DOB: 01.29.2018 H FHF AUTHORITY 6026 ET
 FHF 408 RITA 21W
 Polled Hereford NJW 98S R117 RIBEYE 88X ET
 Spring Pair C STARBURST 4029 ET
 HHR PAY IN GOLD 1008X ET

EPD's CE: -0.9 BW: 3.9 WW: 58 YW: 92 MILK: 30
 REA: 0.53 MARB: 0.11

- AI bred 05.07.2021 to SR Dominate 308F.
- We have been impressed with the Authority offspring in every phase from show champions, herd bulls, and females in production. He does it all and does it well.
- Her dam, 4029, which is also featured in this offering, has been an incredible producer for us and her daughters are the real deal.
- She has a pretty special heifer calf at her side sired by SR Dominate. Our Dominate calves have started out a little gangly but when they start filling out they will be special.
- Average progeny ratio 1@98 for BW. Ranks in the top 15% for MM, TEAT, REA, BMI, BII, CHB; top 20% for WW, YW; top 25% for CW.
- **LOT 44A - AHA# 44238488 - February 15 heifer by SR Dominate 308F ET.**



Full sib to Lot 45.



LOT 46

Daughter of Lot 46.



45 BK FISTFUL OF VICKY 8208F

Reg # 44003936 TRIARA UNLEASHED 893U
 DOB: 02.28.2018 LCX UNLEASHED KEEPSAKE 1110 ET
 MSU KEEPSAKE 14S
 Polled Hereford BR MOLER ET
 Spring Pair BLACKTOP VICKY 028 ET
 SSF VICKY 631

EPD's CE: 0.8 BW: 3.8 WW: 56 YW: 91 MILK: 23 REA: 0.44 MARB: -0.04

- AI bred 05.07.2021 to SR Dominate 308F.
- Here is a full sister to Jacob Moore's 2016 Fort Worth Reserve Grand Champion Female.
- The Blacktop Vicky daughters are prime property, five Blacktop Vicky granddaughters sold in our 2021 Spring Edition Sale for an average of \$23,590.
- We just can't say enough about the genetic lineage and how consistent Vicky has been each and every year.
- Ranks in the top 25% for WW, YW, CW, REA, CHB.
- **LOT 45A & 45B - 45A, AHA# 44238490 & 45B, AHA# 44238493 - April 1st twin bulls by ECR 3116 Adventure 7647 ET.**

46 SULL ABOUT OLIVIA 3936

Reg # 43455903 THM DURANGO 4037
 DOB: 09.08.2013 CRR ABOUT TIME 743
 CRR D03 CASSIE 206
 Polled Hereford REMITALL ONLINE 122L
 Spring Pair STAR KKH SSF OLIVIA 15U ET
 SSF KEYSHA 949

EPD's CE: -1.3 BW: 4.9 WW: 65 YW: 103 MILK: 25 REA: 0.56 MARB: -0.00

- AI bred 05.07.2021 to H The Profit 8426 ET.
- Here is a cool looking About Time daughter out of the premier donor Olivia 15U. Olivia 15U was the \$175,000 feature high seller in the Star Lake Dispersal where she set a modern day record. She was crowned National Champion Female at the 2010 NWSS, 2009 NAILE, and was twice crowned National Champion at the Fort Worth Stock Show in 2009 and 2010.
- She has been a great producer for us, she produced a \$9,000 daughter and several top herd bulls.
- Ranks in the top 4% for WW; top 5% for YW; top 10% for CW, REA.
- **LOT 46A - AHA# 44238495 - March 10th heifer by H The Profit 8426 ET.**

POLLED & HORNED
HEREFORD
Fall Breds



Daughters of Lot 47.



Daughter of Lot 48.



47 C STARBURST 4029 ET

Reg # 43469635
DOB: 01.04.2014
Polled Hereford
Fall Bred

NJW 98S R117 RIBEYE 88X ET
HHR PAY IN GOLD 1008X ET

SHF RIB EYE M326 R117
NJW 9126J DEW DOMINO 98S
C -S PURE GOLD 98170
RR BONDED LADY P824

EPD's CE: 3.4 BW: 3.1 WW: 52 YW: 82 MILK: 32 REA: 0.55 MARB: 0.24

- AI bred to SR Dominate 308F; due 10.18.2021.
- Here is a definite sale feature! We purchased 4029 as a bred heifer from the Colyer operation in Idaho. We were looking for a young donor and she was everything we hoped for.
- She has been a phenomenal producer knocking out top sellers like \$40,000, \$30,000, \$25,000, \$17,000, and many over \$10,000. She's the real deal and she makes embryos too! She has six daughters selling in this sale
- She is a full sister to C Candy Cane 4030 the National Champion Polled Female and high end donor.
- Average progeny ration 3@97.7 for BW. Ranks in the top 2% for TEAT; top 4% for UDDR; top 10% for MM; REA, MARB, CHB.

48 BK DAT CHICK 6206D

Reg # 43802304
DOB: 07.03.2016
Horned Hereford
Fall Bred

CHURCHILL SENSATION 028X
BK BAT CHICK 4114B ET

UPS DOMINO 3027
CHURCHILL LADY 7202 ET
NJW 98S R117 RIBEYE 88X ET
HH MISS ADVANCE 4190P

EPD's CE: 5.9 BW: 0.4 WW: 46 YW: 71 MILK: 37 REA: 0.33 MARB: 0.19

- AI bred to H The Profit 8426 ET; due 09.17.2021.
- Here is a young donor that has the potential to write her own history book. She is the dam of the popular Lot 53 in our 2021 Spring Edition Sale, that female sold for \$79,000 and we believe is one of the most elite prospects we have ever sold. BK Dat Chick was no accident she is sired by the proven sire Sensation 028 X, her dam is sired by 88X out of the great Holden donor 4190. Her pedigree is rich and deep!
- These young females aren't as fleshy or mature yet but they are producers and will be incredible producers in the future. Buy with confidence!!
- Ranks in the top 1% for BMI, BII; top 2% for MM; top 10% for BW, TEAT; top 15% for UDDR, MARB; top 20% for CED.



LOT 49



Daughter of Lot 49.



HAPP Kool Aid Points 1218 ET, dam of Lots 49, 50 & 51.



LOT 50

49 BK COOL DEAL 5054C ET

Reg # 43666766
 DOB: 10.03.
 Horned Hereford
 Fall Bred

NJW 98S R117 RIBEYE 88X ET
 HAPP KOOL AID POINTS 1218 ET

SHF RIB EYE M326 R117
 NJW 9126J DEW DOMINO 98S
 DELHAWK KAHUNA 1009 ET
 CRANE STYLE POINTS 945

EPD's CE: 4.4 BW: 2.3 WW: 52 YW: 85 MILK: 24 REA: 0.59 MARB: 0.21

- AI bred to SR Dominate 308F; due 09.02.2021.
- BK Cool Deal 5054 quickly proved her talent in the donor pen. She has been a very dominating donor, she produced a Division Champion Female at JNHE for the Clark family and recently her daughters averaged over \$12,000 in our Spring Edition Sale.
- This proven donor is here for the taking and she sells bred back to the popular Dominate.
- Dam is the immortal Happ Kool Aid points 1218. Grab onto the 1218 descendants as they are flat out producers.
- Ranks in the top 10% for REA; top 15% for UDDR, TEAT, MARB, BMI, BII, CHB.

50 BK COOL BREEZE 5704C ET

Reg # 43672615
 DOB: 10.08.2015
 Horned Hereford
 Fall Bred

NJW 98S R117 RIBEYE 88X ET
 HAPP KOOL AID POINTS 1218 ET

SHF RIB EYE M326 R117
 NJW 9126J DEW DOMINO 98S
 DELHAWK KAHUNA 1009 ET
 CRANE STYLE POINTS 945

EPD's CE: 3.5 BW: 2.9 WW: 55 YW: 91 MILK: 24 REA: 0.54 MARB: 0.16

- AI bred to H Montgomery; due 09.02.2021.
- We have 100% confidence in these 88X x Kool Aid daughters. We know how they produce and we know they will make money. Only in a sale like this do you get the opportunity to own these.
- She had a heifer calf that sold in our 2020 Spring Edition Sale, and sells bred to Montgomery which is covering the country with champions.
- In our 2021 Spring Edition Sale the Kool Aid granddaughters averaged \$20,350. They are producers!!!
- 5704 is stout made and super correct in her lines and has an exceptional look.
- Ranks in the top 15% for REA, BMI, BII; top 20% for MM; top 25% for CHB.

51 BK COOL STYLE 5702C ET

Reg # 43672598
 DOB: 10.02.2015
 Horned Hereford
 Fall Bred

NJW 98S R117 RIBEYE 88X ET
 HAPP KOOL AID POINTS 1218 ET

SHF RIB EYE M326 R117
 NJW 9126J DEW DOMINO 98S
 DELHAWK KAHUNA 1009 ET
 CRANE STYLE POINTS 945

EPD's CE: 5.4 BW: 2.0 WW: 54 YW: 86 MILK: 25 REA: 0.56 MARB: 0.18

- AI bred to JDH AH Standout 16G; due 09.02.2021.
- These 88X x Kool Aid daughters are hard to part with but we are going to offer you our very best young females.
- Super correct from end to end and comes equipped with look and power.
- She sells bred to Dominate which makes this package more exciting.
- Ranks in the top 10% for REA; top 15% for UDDR, TEAT, MARB, BMI, BII; top 20% for CED; top 25% for BW, CHB.



52 H MISS ADVANCE 7756 ET

Reg # 43857857
 DOB: 08.11.2017
 Horned Hereford
 Fall Bred

NJW 98S R117 RIBEYE 88X ET
 HH MISS ADVANCE 9228W

SHF RIB EYE M326 R117
 NJW 9126J DEW DOMINO 98S
 HH ADVANCE 6163S
 HH MISS ADVANCE 6094S

EPD's CE: 3.3 BW: 1.7 WW: 47 YW: 74 MILK: 26 REA: 0.35 MARB: 0.19

- AI bred to ECR 3116 Adventure 7647 ET; due 09.02.2021.
- Here is an 88X daughter out of a Holden female, bred for maternal excellence.
- She will match up great with the service sire Adventure, he makes them good looking, soft middle, with added power.
- Ranks in the top 10% for TEAT, BMI, BII; top 15% for MARB, CHB.



53 WSCC IMA 63F ET

Reg # 43957511
 DOB: 04.05.2018
 Polled Hereford
 Fall Bred

NJW 98S R117 RIBEYE 88X ET
 SLL TCC MS HARLEY 312 ET

SHF RIB EYE M326 R117
 NJW 9126J DEW DOMINO 98S
 CRR ABOUT TIME 743
 LCC TWO TIMIN 438 ET

EPD's CE: 4.4 BW: 2.4 WW: 52 YW: 81 MILK: 26 REA: 0.47 MARB: 0.15

- AI bred to SR Dominate 308F ET; due 09.27.2021.
- Sired by maternal superstar 88X, this sharp made female has a bright future, she's young and has all the genetics and quality to produce the great ones.
- Her dam is Harley which is a direct daughter of the great Two Timin 438.
- This dark red, big red-eyed female is something to spectate in person. Flawless from the ground up this female will be fun to mate.
- Just wait until you get this Dominate calf on the ground, she is bred for success!





LOT 54

54 BK FEELING SWEET 8101F

Reg # 43964699 TH 122 711 VICTOR 719T
 DOB: 01.04.2018 CRR 719 CATAPULT 109
 CRR 4037 ECLIPSE 808
 Horned Hereford AH JDH CRACKER JACK 26U ET
 Fall Bred HAPP SWEET ANNIE 4A ET
 MCR PPF MISS GOLD DOM 206 ET

EPD's CE: 2.5 BW: 3.6 WW: 60 YW: 96 MILK: 31
 REA: 0.52 MARB: -0.01

- AI bred to H The Profit 8426 ET; due 09.17.2021.
- This future donor female is sired by Catapult out of Sweet Annie which makes a perfect mix of power, performance, and phenotype.
- Sweet Annie was the Grand Champion Polled Female at the 2015 JNHE and has produced multiple champions and top sellers in production.
- Elite performance EPD profile to complement her elite profile.
- Ranks in the top 10% for MM; top 15% for WW, YW, REA; top 20% for CW.



LOT 55

55 WSCC IMA 107F ET

Reg # 43957509 TH 122 711 VICTOR 719T
 DOB: 05.14.2018 CRR 719 CATAPULT 109
 CRR 4037 ECLIPSE 808
 Polled Hereford CRR ABOUT TIME 743
 Fall Bred SLL TCC MS HARLEY 312 ET
 LCC TWO TIMIN 438 ET

EPD's CE: 0.5 BW: 3.4 WW: 57 YW: 92 MILK: 25 REA: 0.48 MARB: -0.13

- AI bred to SR Dominate 308F; due 09.27.2021.
- This Catapult female has a striking look, power, and rib shape.
- Her dam is sired by About Time out of the immortal Harley donor which has raised countless champions, high sellers, donors and herd bulls.
- It just gets better, she is bred to Dominate!
- Just think of the potential opportunity in this genetic package.
- Ranks in the top 20% for WW, YW, REA.



LOT 56

56 CRR 109 SPARKLE 466

Reg # 43482989 TH 122 711 VICTOR 719T
 DOB: 03.07.2014 CRR 719 CATAPULT 109
 CRR 4037 ECLIPSE 808
 Polled Hereford CRR HELTON 980
 Fall Bred CRR 980 SPARKLER 123
 CRR 420 SPARKLER 735

EPD's CE: -3.9 BW: 6.0 WW: 63 YW: 104 MILK: 29 REA: 0.43 MARB: -0.09

- AI bred to American Classic; due 09.02.2021.
- This great donor female was built from the ground up with maternal genetics. She is sired by the popular Catapult and out of Coyote Ridge 123 cow.
- She sells AI bred to American Classic which has quickly proven his ability to produce champions. Proven genetics geared for quick returns.
- Ranks in the top 4% for YW; top 5% for WW; top 15% for MM; top 25% for REA.

57 /S LADY THOR 4086B

Reg # 43513487	THR THOR 4029	JDH 15 WRANGLER 25L
DOB: 02.01.2014		THR MISS THOR 0266
Polled Hereford	/S LADY RIBEYE 111Y	SHF RIB EYE M326 R117
Fall Bred		/S LADY ADVANCE 9018W

EPD's CE: -0.7 BW: 3.6 WW: 57 YW: 90 MILK: 18 REA: 0.62 MARB: 0.04

- AI bred to The Profit 8426 ET; due 10.27.2021.
- We purchased this Thor daughter from the Shaw program to add to our donor lineup. She has worked well for us and has a very bright future.
- She sells bred to H The Profit, this mating should be a perfect combination!
- A unique genetic package that will mate up well to many of the popular and sought after bulls in the Hereford business today.
- Average progeny ratio 5@97.8 for BW.
- Ranks in the top 4% for UDDR; top 5% for REA; top 15% for CW; top 20% for WW, CHB; top 25% for YW.



58 BK EXCITED VICKY 7560E ET

Reg # 44117761	CRR 5280	CRR 719 CATAPULT 109
DOB: 09.02.2017		CRR 435 KELLY 178
Polled Hereford	BLACKTOP VICKY 028 ET	BR MOLER ET
Fall Bred		SSF VICKY 631

EPD's CE: -1.0 BW: 3.8 WW: 54 YW: 87 MILK: 18 REA: 0.36 MARB: -0.08

- AI bred to HAPP BK Valor 37C; due 10.28.2021.
- Sired by Coyote Ridge and Colyer herd sire 5280, he has a pedigree stacked with maternal greatness.
- We could talk all day about her dam Blacktop Vicky, Vicky has proven herself as a premier donor. She has produced National Champions, elite donors, great herd sires, and they have all out produced themselves. The Vicky daughters offspring averaged \$23,590 in our 2021 Spring Edition Sale.



WATCH AND BID ONLINE
Register and Bid Online at www.cci.live



LOT 59

59

BK EVERLASTING STAR 7036E

Reg # 43885255 CRR 719 CATAPULT 109
 DOB: 10.01.2017 CRR 5280 CRR 435 KELLY 178
 Horned Hereford NJW 98S R117 RIBEYE 88X ET
 Fall Bred C STARBURST 4029 ET HHR PAY IN GOLD 1008X ET

EPD's CE: -1.3 BW: 3.9 WW: 56 YW: 85 MILK: 23
 REA: 0.46 MARB: 0.07

- AI bred to SR Dominate 308F ET; due 10.18.2021.
- Here is a direct daughter of C Starburst 4029 sired by 5280 which adds more punch to her maternal pedigree.
- She's built as good as they come and backed with maternal power.
- This young female displays tremendous depth of rib with added shape and power.
- The 4029 daughters have been consistent and excellent producers.
- Ranks in the top 4% for UDDR; top 10% for TEAT; top 20% for REA.



LOT 60

60

C BAR ONE 1262 MILES 4424 ET

Reg # 43525492 NJW 98S R117 RIBEYE 88X ET
 DOB: 09.05.2014 C MILES MCKEE 2103 ET C NOTICE ME ET
 Polled Hereford UPS TCC NITRO 1ET
 Fall Bred C NOTICE ME NITRO 1262 C NOTICE ME ET

EPD's CE: 2.6 BW: 3.9 WW: 53 YW: 77 MILK: 31 REA: 0.33 MARB: 0.05

- AI bred to SR Dominate 308F; due 10.02.2021.
- Here is a stout built, great looking Miles daughter that is out of a Nitro X Notice Me which is the anchor female for the Colyer program.
- She has been great for our program, however, we are most excited about the Dominate baby she will have this fall. With the combination of pedigree and phenotype this one will be special.
- Grab onto the opportunity to acquire a double bred C Notice ME daughter. Big time potential here!
- Average progeny ratio 2@98 for BW.
- Ranks in the top 10% for MM.



LOT 61

61

EXR BE HAPPY 4116 ET

Reg # 43519555 THM DURANGO 4037 CS BOOMER 29F
 DOB: 08.15.2014 THM 7085 VICTRA 9036
 Polled Hereford NJW 72N P606 BE HAPPY 161X ET
 Fall Bred NJW 94J DEW 72N

EPD's CE: 0.4 BW: 2.0 WW: 49 YW: 80 MILK: 31 REA: 0.39 MARB: 0.09

- AI bred to H The Profit 8426 ET; due 09.02.2021.
- Here is a good looking Durango daughter that we purchased from Express Ranches. She has a great look. She is deep bodied and great structured. Her Profit baby should be an awesome bonus!
- Average progeny ratios 4@99.5 for BW, 2@ 102.5 for both WW and YW.
- Ranks in the top 10% for MM.

62 BK EARLY ADVANCE 7511E ET

Reg # 43955495 CRR 109 CATAPULT 322 CRR 719 CATAPULT 109
DOB: 09.07.2017 CRR 713 KELLY 0117
Horned Hereford CL 1 DOMINO 206M
Fall Bred HH MISS ADVANCE 4190P HH MISS ADVANCE 1074L

EPD's CE: -2.5 BW: 3.4 WW: 50 YW: 83 MILK: 26 REA: 0.31 MARB: -0.16

- AI bred to SR Dominate 308F ET; due 09.02.2021.
- We were impressed by the quality and pedigree of 322 as a yearling and we flushed some of our very best donors to him. He worked extremely well for us and his daughters are very special.
- Study the bone, feet, and the lines this female presents. She is elite headed, level hiped and just cool made in her design on the profile.
- Since she is bred to Dominate this calf will not only be royally bred it will be special too.
- Ranks in the top 15% for UDDR, TEAT.



63 BK EASY ADVANCE 7512E ET

Reg # 43955496 CRR 109 CATAPULT 322 CRR 719 CATAPULT 109
DOB: 09.06.2017 CRR 713 KELLY 0117
Polled Hereford CL 1 DOMINO 206M
Fall Bred HH MISS ADVANCE 4190P HH MISS ADVANCE 1074L

EPD's CE: -2.7 BW: 3.7 WW: 53 YW: 87 MILK: 29 REA: 0.34 MARB: -0.16

- AI bred to JDH AH Standout 16G; due 09.02.2021.
- There are three of these full sisters out of 322 and 4190. They are all a little different but they are all extremely good. With their solid pedigree they will produce and last for years.
- Darker in color and shorter marked than her sisters the well designed female will be fun to mate.
- Due to Standout and we are excited about the Standouts this spring.
- Ranks in the top 15% for UDDR, TEAT.



64 BK EXACT ADVANCE 7510E ET

Reg # 43955494 CRR 109 CATAPULT 322 CRR 719 CATAPULT 109
DOB: 09.03.2017 CRR 713 KELLY 0117
Horned Hereford CL 1 DOMINO 206M
Fall Bred HH MISS ADVANCE 4190P HH MISS ADVANCE 1074L

EPD's CE: -2.6 BW: 3.6 WW: 50 YW: 83 MILK: 25 REA: 0.31 MARB: -0.16

- AI bred to ECR 3116 Adventure 7647 ET; due 09.27.2021.
- This 322 daughter has the look and the power it takes. Her dam, 4190, was an amazing female producing herd bulls and stellar females. 4190 still had a perfect udder at 15 years of age.
- Ranks in the top 15% for UDDR, TEAT.





65 BK FOLLOW VICKY 8105F ET

Reg # 43964712	CRR 109 CATAPULT 322	CRR 719 CATAPULT 109
DOB: 01.04.2018		CRR 713 KELLY 0117
Polled Hereford	BLACKTOP VICKY 028 ET	BR MOLER ET
Fall Bred		SSF VICKY 631

EPD's CE: 0.7 BW: 2.5 WW: 53 YW: 87 MILK: 26 REA: 0.41 MARB: -0.11

- AI bred to JDH AH Standout 16G; due 09.02.2021.
- The Catapult females are true breeding pieces, built with years of maternal genetics.
- Her dam, Blacktop Vicky, has been an anchor female for Buck Cattle Co. and her daughters are out producing her. This female will be a valuable asset to any progressive program.
- Ranks in the top 15% for TEAT.



66 VC FACETIME 8061F ET

Reg # --	HH ADVANCE 4075B ET	HH ADVANCE 1013Y ET
DOB: 09.14.2018		HH MISS ADVANCE 0121Z
Polled Hereford	BK WF BAM BAM 450B	VH MR BG 1104
Fall Bred		BLACKTOP VICKY 028 ET

EPD's CE: - BW: - WW: - YW: - MILK: - REA: - MARB: -

- AI bred to ECR 3116 Adventure 7647 ET; due 09.02.2021.
- Sired by 4075 the featured high selling bull in the 2015 Holden Hereford sale to Hoffman Ranch. Her dam is a fantastic looking, perfect uddered female sired by Unleashed Keepsake and out of time tested producing donor Blacktop Vicky.
- 8061 is super correct from end to end and is going to be one big time power cow when she matures. Females of this caliber are hard not to keep in the program.



67 BK FLAUNTIN VICKY 8520F ET

Reg # 44125252	HH ADVANCE 4075B ET	HH ADVANCE 1013Y ET
DOB: 03.02.2018		HH MISS ADVANCE 0121Z
Polled Hereford	BLACKTOP VICKY 028 ET	BR MOLER ET
Fall Bred		SSF VICKY 631

EPD's CE: 1.6 BW: 4.0 WW: 56 YW: 86 MILK: 13 REA: 0.44 MARB: 0.00

- AI bred to HAPP BK Valor 37C; due 10.23.2021.
- We used 4075 pretty hard for a couple of years and got along great. He added length and extension to his calves without sacrificing maternal value.
- It's exciting to offer these Vicky daughters in this sale because we know how they will produce.
- Grab onto this proven producing lineage and let them go out and produce in your program.
- Ranks in the top 15% for TEAT; top 25% for REA.

68 BK EASY VICKY 7513E ET

Reg # 43955497 SHF WONDER M326 W18 ET
 DOB: 09.18.2017 NJW 73S W18 HOMETOWN 10Y ET NJW P606 72N DAYDREAM 73S
 Polled Hereford BR MOLER ET
 Fall Bred BLACKTOP VICKY 028 ET SSF VICKY 631

EPD's CE: 5.2 BW: 2.4 WW: 53 YW: 91 MILK: 28 REA: 0.43 MARB: 0.08

- AI bred to ECR 3116 Adventure 7647 ET; due 09.27.2021.
- These Hometown daughters are tough to beat, they are excellent mothers and they look good doing it. She is out of the great Blacktop Vicky which has been a foundation donor for our program.
- Ranks in the top 20% for MM, CHB; top 25% for CED, YW, CW, REA.



LOT 68



Blacktop Vicky 028 ET, dam of Lot 68.

69 BK DIDI 6207D

Reg # 43802307 UPS DOMINO 3027
 DOB: 08.09.2016 CHURCHILL SENSATION 028X CHURCHILL LADY 7202 ET
 Polled Hereford NJW 98S R117 RIBEYE 88X ET
 Fall Bred BK BRIDGET 419B ET RJS BLINE AWESOME LADY 1122 ET

EPD's CE: 3.2 BW: 2.3 WW: 55 YW: 77 MILK: 41 REA: 0.48 MARB: 0.20

- AI bred to ECR 3116 Adventure 7647 ET; due 09.02.2021.
- BK DIDI is an outstanding young female that is sired by 028X and out of a proven 88X female.
- She is young but has proven she is a producer, her second heifer calf sold for \$45,000 to the Dailey family and was shown very successfully.
- Take advantage of these great young females, she sells bred to Dominate!
- Average progeny ratios 2@92 for BW and 1@107 for WW.
- Ranks in the top 1% for MM, BMI, BII; top 10% for TEAT; top 15% for MARB; top 20% for REA; top 25% for CHB.



LOT 69

70 BK FUNNY SENSATION 8537F

Reg # 44005997 UPS DOMINO 3027
 DOB: 08.12.2018 CHURCHILL SENSATION 028X CHURCHILL LADY 7202 ET
 Horned Hereford NJW 98S R117 RIBEYE 88X ET
 Fall Bred BK DARYA 6208D ET BK H YAHTZEE 1088

EPD's CE: 8.2 BW: -0.6 WW: 48 YW: 73 MILK: 38 REA: 0.44 MARB: 0.21

- AI bred to H The Profit 8426 ET; due 10.18.2021.
- This young 028X daughter has an abundance of talent, quality, power, and a rich maternal pedigree.
- She sells bred to the 2020 Denver Champion H The Profit, this mating will reap some huge returns.
- Sensation is deceased so take advantage of the opportunity to acquire his daughters especially at such a young age with their entire productive lives in front of them.
- Ranks in the top 1% for BMI, BII; top 2% for MM; top 4% for BW; top 10% for CED, TEAT; top 15% for UDDR, MARB; top 25% for REA, CHB.



LOT 70



BK Darya 6208D, dam of Lot 70.



LOT 71

BK Cool Beans 5707C, dam of Lot 71.

71 BK BH EASY BEANS 7545E ET

Reg # 44117760	BK WF APACHE A28	TH 89T 743 UNTAPPED 425X ET
DOB: 08.28.2017		BLACKTOP VICKY 028 ET
Horned Hereford	BK COOL BEANS 5707C	VH MR BG 1104
Fall Bred		HAPP KOOL AID POINTS 1218 ET

EPD's CE: 5.3 BW: 0.9 WW: 51 YW: 84 MILK: 23 REA: 0.53 MARB: 0.02

- AI bred to H The Profit 8426 ET; due 09.27.2021.
- This female is BK Cool Beans 5707's first natural calf, Cool Beans quickly became a leading donor for us. She has produced several top sellers, BK BH Fast Ball the 2021 Cattlemen's Congress Grand Champion Horned Bull, 2020 Tulsa State Fair Champion Female, the 2020 OYE Reserve Champion Female, and three division champions at the JNHE.
- She is sired by Apache which has been our go to calving ease sire for several years.
- This female is loaded with potential and needs to be in the donor pen.
- Just a three-year-old when she matures she will be a beast of a cow. This calving ease specialist is dark red, short marked and loaded with style.
- Ranks in the top 10% for BW; top 15% for REA; top 25% for CED.

72 BK FELICITY 8209F

Reg # 44117514	BK WF APACHE A28	TH 89T 743 UNTAPPED 425X ET
DOB: 02.13.2018		BLACKTOP VICKY 028 ET
Polled Hereford	REMITALL HONEY 65U	REMITALL RR DELIVERY ET 347R
Fall Bred		REMITALL HONEY 13S

EPD's CE: -5.0 BW: 3.5 WW: 50 YW: 84 MILK: 20 REA: 0.42 MARB: 0.03

- AI bred to H The Profit 8426 ET; due 10.24.2021.
- This female is sired by Apache which we have used on heifers for years. His calves come small and they have quality and produce.
- Her dam, 65U, was a power cow in our ET program. She produced many champions and top sellers.
- Her dam originated in the renowned Remitall program in Canada that is know for producing stout made females with exceptional udders.



LOT 72

73 BK FLIRTY & FANCY 8530F

Reg # 44005990	BK DISTINCTION D18 ET	CHAC MASON2214
DOB: 10.15.2018		HAPP KOOL AID POINTS 1218 ET
Horned Hereford	BK BRIDGET 419B ET	NJW 98S R117 RIBEYE 88X ET
Fall Bred		RJS BLINE AWESOME LADY 1122 ET

EPD's CE: 2.2 BW: 2.9 WW: 62 YW: 91 MILK: 28 REA: 0.76 MARB: 0.07

- AI bred to ECR 3116 Adventure 7647 ET; due 09.27.2021.
- She is sired by Distinction which is a Mason son out of Kool Aid Points. He won his division in Denver and we kept him to use in our program. He did an awesome job for our operation. His calves have sold extremely well and his sons are very popular with our bull buyers.
- Her dam is a sharp made 88X daughter that has been a top producer.
- Don't miss an opportunity to acquire elite females that stem back to 88X. He has been one of the elite bulls when it comes to producing high end females and bulls.
- Ranks in the top 2% for REA; top 2% for CW; top 5% for WW; top 15% for CHB; top 20% for YW, MM.



LOT 73

Daughter of Lot 73.

74 BK DANNI 6121D1

Reg # 44070375 C KRC 1008X MILES 4288 ET UPS DOMINO 3027
 DOB: 01.15.2016 CHURCHILL LADY 7202 ET
 Polled Hereford TH 71U 719T MR HEREFORD 11X
 Fall Bred CC CX 22U 11X LDY PRISY 31Z ET CC 52S 28R PRISCILLA 22U

EPD's CE: -0.6 BW: 4.4 WW: 58 YW: 90 MILK: 37 REA: 0.56 MARB: -0.08

- AI bred to H The Profit 8426 ET; due 09.17.2021.
- This outstanding 4288 daughter has a great look and a cool pedigree. She is sired by 4288 which is stacked deep with proven Colyer genetics and is an incredible sire at every phase of production. We love his daughters in production and they have been extremely popular with our customers.
- We purchased her dam in the National Sale in Denver and she was good looking, great uddered, and had added performance.
- She produced a heifer which sold to the Brewer family in our 2019 Fall Premier Sale.
- Stout made, level hiped, big ribbed, well balanced and super attractive on the profile. Big time earning potential here!
- Ranks in the top 1% for BMI, BII; top 2% for MM; top 10% for BW, TEAT; top 15% for UDDR, MARB; top 20% for CED.



LOT 74

75 BK FEATURED STAR 846F ET

Reg # 43951264 HAPP BK VALOR 37C ET HAPP EXTRA POINT 1220 ET
 DOB: 03.05.2018 JSF 12N LADY VAL 9T
 Polled Hereford NJW 98S R117 RIBEYE 88X ET
 Fall Bred C STARBURST 4029 ET HHR PAY IN GOLD 1008X ET

EPD's CE: 2.5 BW: 2.4 WW: 58 YW: 88 MILK: 26 REA: 0.63 MARB: 0.15

- AI bred to H The Profit 8426 ET; due 09.02.2021.
- She is definitely a featured star! Valor has knocked it out of the park for us in production, they show extremely well and when they get into production, they step-up another notch.
- Her dam 4029 which is a featured donor in this offering is an incredible female. She is due to calve to Dominate this fall, expect the best!!
- 4029 is a flushmate sister to the immortal 4030 better known as Candy Cane.



LOT 75

76 BK FLAMING STAR 8504F ET

Reg # 4405948 HAPP BK VALOR 37C ET HAPP EXTRA POINT 1220 ET
 DOB: 10.12.2018 JSF 12N LADY VAL 9T
 Polled Hereford NJW 98S R117 RIBEYE 88X ET
 Fall Bred C STARBURST 4029 ET HHR PAY IN GOLD 1008X ET

EPD's CE: 2.5 BW: 2.4 WW: 58 YW: 88 MILK: 26 REA: 0.63 MARB: 0.15

- AI bred to SR Dominate 308F ET; due 09.02.2021.
- Here is a Valor out of Starburst bred to Dominate. It doesn't get much better than this!!
- Her genetic make-up is second to none when it comes to raising elite Hereford cattle.
- Ranks in the top 5% for REA; top 10% for CW; top 15% for UDDR, TEAT, CHB; top 20% for WW; top 25% for MARB.



LOT 76



LOT 77

77 BK FANCY TOWN 8505F ET

Reg # 44005949	HAPP BK VALOR 37C ET	HAPP EXTRA POINT 1220 ET
DOB: 09.15.2018		JSF 12N LADY VAL 9T
Polled Hereford	H LADY HOMETOWN 3513	NJW 73S W18 HOMETOWN 10Y ET
Fall Bred		HH MISS ADVANCE 0144X ET

EPD's CE: 4.7 BW: 2.2 WW: 59 YW: 90 MILK: 22 REA: 0.52 MARB: 0.12

- AI bred to ECR 3116 Adventure 7647 ET; due 09.27.2021.
- Here is a striking Valor daughter out of 3513 which produced Division Champions in Denver, Fort Worth, and Junior Nationals.
- She has the genetic lineage to produce Champions!
- Well designed with added bone and true muscle.
- Ranks in the top 5% for CW; top 15% for WW, REA; top 20% for BMI, BII, CHB; top 25% for YW.



LOT 78

78 BK FAMOUS ADVANCE 8501F

Reg # 44005944	HAPP BK VALOR 37C ET	HAPP EXTRA POINT 1220 ET
DOB: 09.09.2018		JSF 12N LADY VAL 9T
Horned Hereford	HH MISS ADVANCE 4190P	CL 1 DOMINO 206M
Fall Bred		HH MISS ADVANCE 1074L

EPD's CE: -0.6 BW: 3.2 WW: 54 YW: 86 MILK: 21 REA: 0.43 MARB: -0.05

- AI bred to JDH Standout 16G; due 09.02.2021.
- We purchased her dam, 4190, from Nelson Land & Cattle when we first started our Hereford program. She had previously produced two elite herd bulls, H Richochet and H Bailout. After we purchased her, she produced countless great females including the Reserve Champion Female at the National Western. Her daughters have been awesome producers for us, they are real world cows with great phenotypes.
- This is truly an elite horned female and true power cow in the making. Love her dark red color, short markings and tremendous power she displays.
- Ranks in the top 10% for CW; top 25% for REA.



LOT 79

79 BK FRILLY 8541F

Reg # 44006002	HAPP BK VALOR 37C ET	HAPP EXTRA POINT 1220 ET
DOB: 08.26.2018		JSF 12N LADY VAL 9T
Horned Hereford	HH MISS ADVANCE 4319B ET	HH ADVANCE 1069Y
Fall Bred		HH MISS ADVANCE 8285U ET

EPD's CE: -3.0 BW: 4.7 WW: 60 YW: 97 MILK: 26 REA: 0.55 MARB: -0.01

- AI bred to JDH Standout 16G; due 09.02.2021.
- Here is a good looking Valor female out of a proven producing Holden dam.
- This cross has worked well as the females are super maternal and top end producers.
- Ranks in the top 10% for CW, REA; top 15% for WW; top 25% YW.

80 BK FOCUSED ON THE FUTURE 805

Reg # 43997360 HAPP BK VALOR 37C ET HAPP EXTRA POINT 1220 ET
 DOB: 10.20.2018 JSF 12N LADY VAL 9T
 Polled Hereford PW VICTOR BOOMER P606
 Fall Bred H2 P606 9N01 MS BOOMER 1N19 H2 439 MS MASSEY 3011 9N01

EPD's CE: -2.5 BW: 3.4 WW: 57 YW: 83 MILK: 24 REA: 0.60 MARB: 0.08

- AI bred to ECR 3116 Adventure 7647 ET; due 09.02.2021.
- 8055 is a sharp made Valor daughter out of an awesome P606 daughter we bought from our good friend and fellow Hereford breeder, Jimmy Johnson. She is young and is bred to produce.
- The Valor daughters are top end producers and this female mated to Adventure the bull from Fawcett's should be pretty exciting.
- Ranks in the top 10% for CW, REA.



81 BK EXTRA YAHTZEE 7508E ET

Reg # 43955492 HAPP BK VALOR 37C ET HAPP EXTRA POINT 1220 ET
 DOB: 09.08.2017 JSF 12N LADY VAL 9T
 Polled Hereford CRR ABOUT TIME 743
 Fall Bred BK H YAHTZEE 1088 NJW 78P 63N LADYSPORT 51W ET

EPD's CE: -2.3 BW: 4.0 WW: 61 YW: 97 MILK: 22 REA: 0.61 MARB: -0.08

- AI bred to SR Dominate 308F ET; due 09.02.2021.
- The Valor daughters haven't disappointed us one bit! They are attractive, built right and they produce. Her dam, Yahtzee, is an impressive individual sired by About Time out of the now deceased 51W, she produced several top sellers and champions.
- 7508 is elite in her design with the power and dimension she displays. Short marked, darker red and is very pretty headed.
- The Dominate calves are the real deal so get ready!
- Ranks in the top 3% for CW; top 10% for WW, YW, REA.



82 BK FOCUS ON YAHTZEE 8507F

Reg # 44005951 HAPP BK VALOR 37C ET HAPP EXTRA POINT 1220 ET
 DOB: 10.05.2018 JSF 12N LADY VAL 9T
 Horned Hereford CRR ABOUT TIME 743
 Fall Bred BK H YAHTZEE 1088 NJW 78P 63N LADYSPORT 51W ET

EPD's CE: 1.3 BW: 3.4 WW: 60 YW: 94 MILK: 21 REA: 0.61 MARB: -0.06

- AI bred to ECR 3116 Adventure 7647 ET; due 09.02.2021.
- There is no doubt that this female will be great property. We have had several 1088 daughters in production, they look the part and they work great. All of the dams in her pedigree are elite donors that have produced herd bulls.
- She has a striking look, bone, shape, and tremendous sweep to her underline. This female has an excellent look and presence to her.
- Elite donor potential in this young well bred female.
- Ranks in the top 3% for CW; top 10% for REA; top 15% for WW, YW.





LOT 83

HAPP Kool Aid Points 1218 ET,
dam of Lot 83, 84 & 86.

83

BK FLAVORED POINTS 8126F

Reg # 44003829 PYRAMID 16W 110T 9116
 DOB: 01.21.2018 H FHF AUTHORITY 6026 ET
 FHF 408 RITA 21W
 Horned Hereford DELHAWK KAHUNA 1009 ET
 Fall Bred HAPP KOOL AID POINTS 1218 ET
 CRANE STYLE POINTS 945

EPD's CE: -0.6 BW: 3.5 WW: 60 YW: 101 MILK: 23
 REA: 0.62 MARB: -0.03

- AI bred to ECR 3116 Adventure 7647 ET; due 09.02.2021.
- This pedigree is loaded with maternal power! Authority has proven he can produce the elite females and herd bulls, Kool Aid needs no introduction, she has produced as many National Champions as any female in the breed the past few years, not to mention the great donors and herd bulls.
- This young three-year-old is stout hipped, big boned, and ultra cool on the profile. Big time donor is in her future plans.
- Ranks in the top 5% for REA; top 10% for CW; top 15% for WW, YW.



LOT 84



LOT 85

84

BK FUNNY POINTS 8121F ET

Reg # 44003825 PYRAMID 16W 110T 9116
 DOB: 04.02.2018 H FHF AUTHORITY 6026 ET
 FHF 408 RITA 21W
 Polled Hereford DELHAWK KAHUNA 1009 ET
 Fall Bred HAPP KOOL AID POINTS 1218 ET
 CRANE STYLE POINTS 945

EPD's CE: -0.2 BW: 3.4 WW: 60 YW: 100 MILK: 23 REA: 0.62 MARB: -0.02

- AI bred to ECR 3116 Adventure 7647 ET; due 09.02.2021.
- This elite female is stacked deep with proven producers and respected cow families. The possibilities are endless of what she can produce in the future.
- If you want a female with style, pedigree and elite performance EPD profiles grab onto these powerful sisters sired by Authority and the immortal Kool Aid Points.
- Ranks in the top 5% for REA; top 10% for CW; top 15% for WW, YW.

85

BK FIRST ROUND 8056F

Reg # 43997362 HAPP BK VALOR 37C ET
 DOB: 09.02.2018 HAPP EXTRA POINT 1220 ET
 JSF 12N LADY VAL 9T
 Polled Hereford CRR ABOUT TIME 743
 Fall Bred BK ACTIVATE 3064A ET
 TH 52N 45P OMEGA 36U

EPD's CE: 0.2 BW: 2.2 WW: 53 YW: 82 MILK: 21 REA: 0.55 MARB: -0.02

- AI bred to H The Profit 8426 ET; due 09.02.2021.
- The Valors are just now getting old enough to be maturing into impressive cows. Their offspring are truly remarkable, it's going to be fun to watch them work for their new owners.
- Her dam was a great cow that produced numerous top sellers and champions.
- Ranks in the top 10% for CW, REA.

86 BK FIXED POINTS 8119F ET

Reg # 44003823 H FHF AUTHORITY 6026 ET PYRAMID 16W 110T 9116
 DOB: 02.26.2019 FHF 408 RITA 21W
 Polled Hereford DELHAWK KAHUNA 1009 ET
 Fall Bred HAPP KOOL AID POINTS 1218 ET CRANE STYLE POINTS 945

EPD's CE: -0.6 BW: 3.5 WW: 60 YW:101 MILK: 23 REA: 0.62 MARB: -0.03

- AI bred to ECR 3116 Adventure 7647 ET; due 09.02.2021.
- These three-year-old females are the oldest Authority daughters. Authority is unmatched in maternal power combined with the ability to make them phenotypically great.
- HAPP Kool Aid Points has been the go to donor in this operation, she doesn't miss and her daughters are following in her footsteps.
- These young females are typical three-year-olds, so they are lighter conditioned and aren't as mature, but they will produce and make money.
- Check out the EPD spread on this elite bred female.
- Ranks in the top 5% for REA; top 10% for CW; top 15% for WW, YW.



LOT 86

87 BK FRAZZLED VICKY 8215F ET

Reg # 44003937 H FHF AUTHORITY 6026 ET PYRAMID 16W 110T 9116
 DOB: 03.02.2018 FHF 408 RITA 21W
 Polled Hereford BR MOLER ET
 Fall Bred BLACKTOP VICKY 028 ET SSF VICKY 631

EPD's CE: -0.8 BW: 3.8 WW: 56 YW:94 MILK: 25 REA: 0.43 MARB: -0.04

- AI bred to ECR 3116 Adventure 7647 ET; due 09.02.2021.
- We love the maternal power this female has to offer, sired by Authority out of Vicky she will definitely be a top producer.
- The Authority daughters are stout in their design and are going to be true power cows.
- Ranks in the top 15% for YW; top 25% for WW, REA.



LOT 87

88 BK EXPECT SWEETNESS 7547E

Reg # 43962295 NJW 79Z 22Z MIGHTY 49C ET NJW 67U 28M BIG MAX 22Z
 DOB: 09.05.2017 BW 91H 100W RITA 79Z ET
 Horned Hereford LCX UNLEASHED KEEPSAKE 1110 ET
 Fall Bred BCH BE SWEET 102 HVR MINA 239

EPD's CE: 4.3 BW: 2.8 WW: 57 YW:81 MILK: 25 REA: 0.45 MARB: 0.11

- AI bred to HAPP BK Valor 37C; due 11.07.2021.
- This female has been a favorite from day one, she has a good look with extreme quality.
- She is a maternal sister to the Clark and Chapman female that won her divisions at Junior Nationals and was Third Overall at OYE.
- Average progeny ratio 1@84 for BW.
- Ranks in the top 15% for WW, YW; top 20% for CHB; top 25% for CW, REA.



LOT 88



LOT 89

CHAC Mason 2214,
sire of Lots 89, 90 & 91.



LOT 90



LOT 91

89 EXR TERRI 7255 ET

Reg # 43850464	CHAC MASON 2214	CRR ABOUT TIME 743
DOB: 09.23.2017		GKB 31 GRACE 7100
Polled Hereford	BR TERRI 9130 ET	BR LANSING 3060
Fall Bred		DM BR TERRI 646 ET

EPD's CE: -3.2 BW: 5.6 WW: 57 YW:26 MILK: 0.66 REA: -0.08 MARB: -

- AI bred to SR Dominate 308F ET; due 09.02.2021.
- This young homozygous polled Mason daughter was produced by Express Ranches. She is a daughter of BR Terri 9130 one of the two foundation females they began bulking their Hereford program on from the Barber Ranch.
- Her 2020 fall heifer sold for \$5,200 in our Spring Edition Sale.
- Ranks in the top 4% for REA; top 10% for CW.

90 GKB CBA 86B 2214 SARA 8004 ET

Reg # 43940682	CHAC MASON 2214	CRR ABOUT TIME 743
DOB: 01.20.2018		GKB 31 GRACE 7100
Polled Hereford	GKB 9279 SARA 1225 86 B	ECR L18 EXTRA DEEP 9279
Fall Bred		C GKB R111 LADY ADVANCE 1225ET

EPD's CE: -0.1 BW: 5.0 WW: 52 YW:85 MILK: 25 REA: 0.70 MARB: -0.06

- AI bred to H The Profit 8426 ET; due 09.22.2021.
- This stout hipped, good looking Mason daughter was bred in the GKB program. She is sired by National Champion Mason and out of the 86B donor.
- This big goggle-eyed female is dark red in color and stout made in her design. Sound in structure and loaded with style.
- She sells bred to The Profit, this should be a magical mating of power and stellar look

91 BK ELIGANT VICKY 7518E ET

Reg # 44010408	CHAC MASON 2214	CRR ABOUT TIME 743
DOB: 10.10.2017		GKB 31 GRACE 7100
Polled Hereford	BLACKTOP VICKY 028 ET	BR MOLER ET
Fall Bred		SSF VICKY 631

EPD's CE: -2.3 BW: 4.8 WW: 49 YW:85 MILK: 22 REA: 0.56 MARB: -0.12

- AI bred to H The Profit 8426 ET; due 09.27.2021.
- This Mason daughter has a great look with added power and substance. These Vicky daughters are elite producers!!!
- A stout hipped, huge boned female with a great look.
- Mated to The Profit her calf could be pretty interesting next fall.
- Ranks in the top 10% for REA.

92 BK KEEPSAKE 501 ET

Reg # 43663845
 DOB: 09.01.2015
 Horned Hereford
 Fall Bred

SULL TCC MR CUSTOM MADE 340 ET
 LCX TRUCK KEEPSAKE 1201

CRR ABOUT TIME 743
 TCC MISS SHELBY 82 ET
 LCX HE'S A TRUCK 104 ET
 LCX ONLINE KEEPSAKE 901 ET

EPD's CE: - BW: - WW: - YW: - MILK: - REA: - MARB: -

- AI bred to SR Dominate 308F ET; due 10.23.2021.
- Here is a moderate framed good looking female. Sired by the popular Custom Made and out of a Keepsake daughter
- This female has a beautiful udder, is stout in her design, and yet still has style to burn.
- She is bred right and has enough power to work in a club calf program.



93 BK BEYONDA 4119B ET

Reg # 43639887
 DOB: 08.17.2014
 Polled Hereford
 Fall Bred

HH PERFECT TIMING 0150 ET
 STAR KKH SSF KEYSHONA 25W ET

CRR ABOUT TIME 743
 HH MISS ADVANCE 6041S ET
 REMITALL ONLINE 122L ET
 SSF KEYSHA 949

EPD's CE: 3.3 BW: 2.2 WW: 57 YW: 84 MILK: 15 REA: 0.43 MARB: -0.07

- AI bred to ECR 3116 Adventure 7647 ET; due 09.02.2021.
- 4119 has been a great asset to our program, she has produced several top females and herd bulls.
- She sells bred to Adventure, who has done an impressive job for our program and we are excited about his future.
- 4119 is stout boned, stout hiped, and just stout made.
- Ranks in the top 10% for TEAT; top 15% for UDDR; top 25% for REA.



94 H KIMBERLY 6426 ET

Reg # 43748514
 DOB: 08.18.2016
 Polled Hereford
 Fall Bred

H/TSR/CHEZ/FULL THROTTLE ET
 UCC 6160 KIMBERLY 8001 ET

H WCC/WB 668 WYARNO 9500 ET
 R SWEET RED WINE 039
 CHURCHILL YANKEE ET
 LCR KIMBERLY 42N

EPD's CE: 0.7 BW: 2.8 WW: 50 YW: 80 MILK: 18 REA: 0.47 MARB: 0.15

- AI bred to ECR 3116 Adventure 7647 ET; due 09.02.2021.
- Here is an extremely good looking, stout Full Throttle daughter out of the famed Hoffman Kimberly cow family.
- She was a top show heifer for Victoria Chapman and has worked great in production. Her daughter sold for \$7500 and was Reserve Division Champion at the 2020 JNHE for Blakelee Hayes.
- Bred to Adventure this should be special.
- Ranks in the top 20% for REA, CHB; top 25% for MARB.



Service Sires ~

The Fall Calving Hereford cows were exposed to the following bulls ...

- H The Profit 8426 ET
- SR Dominate 308F ET
- HAPP BK Valor 37C ET
- ECR 3116 Adventure 7647



LOT 96

95 BK BARLIGHT 4103B ET

Reg # 43643048	CRR ABOUT TIME 743	THM DURANGO 4037
DOB: 08.15.2014		CRR D03 CASSIE 206
Polled Hereford	SPARKS 44U 2007 STARLET 12X	SPARKS TREND 2007
Fall Bred		REMITALL STARLET 44U

EPD's CE: -0.1 BW: 2.3 WW: 56 YW: 86 MILK: 22 REA: 0.44 MARB: -0.04

- AI bred to SR Dominate 308F ET; due 10.02.2021.
- \$40,000 in the Mile High Hereford Sale.
- Sired by the legend About Time and her dam Starlet is a powerhouse female with an amazing udder.
- The About Time daughters dominated the show ring back several years ago and now they are very prevalent in many of the winning bulls and heifers over the past several years.
- Average progeny ratios 3@96.3 for BW, 2@104.5 for WW and 1@107 for YW.
- Ranks in the top 10% for CW; top 25% for WW, REA.

96 BK ZANCY 251

Reg # 43319043	CRR ABOUT TIME 743	THM DURANGO 4037
DOB: 03.22.2012		CRR D03 CASSIE 206
Polled Hereford	STAR FANCY MAID 185R ET	GHC STAR MOOSE 59M
Fall Bred		MOHICAN FANCY 11K

EPD's CE: -2.0 BW: 3.5 WW: 52 YW: 84 MILK: 17 REA: 0.46 MARB: -0.09

- AI bred to ECR 3116 ADVENTURE 7647 ET; due 09.27.2021.
- This massive female has power to burn! She is huge ribbed, extra deep sided, and stout. She is sired by About Time out of one of our original donors 185R.
- She has done a great job for us producing show prospects, replacements, and herd bulls.
- Ranks in the top 15% for TEAT; top 20% for REA.





LOT 101



Daughter of Lot 101.



LOT 102

MAINE-ANJOU &
MAINETAINER

Spring Pairs



LOT 102A

101 BK YOUR WHISKEY 1075 ET

Reg # 465869
DOB: 08.11.2011
75% Maine-Anjou
Spring Pair

BK UNLIMITED POWER 472
GCC IRISH WHISKEY 001R

DMCC LIMITED EDITION 4F
PANNELL MISS 4072
IRISH WHISKEY
MAINE

- AI bred 05.07.2021 to BKMT High Society 10H ET.
- 1075 is the oldest female in the offering, however, she has plenty of future as a donor and as you can see in this offering her daughters are special too. Her pedigree is proven, she is by Unlimited Power out of the dam of BK Sting which was a great Whiskey daughter.
- This is an easy decision, buy this cow, flush her, and make money!!
- PHAF & THF
- **LOT 101A - February 2nd bull by BKMT Game On.**

102 BK BOURBON 4125

Reg # 466508
DOB: 08.17.2014
62.5% Maine-Anjou
Spring Pair

BKRI TRENDSETTER 501T
BK YOUR WHISKEY 1075 ET

NORTHERN IMPROVEMENT 4480 GF
BK KAS REMARKABLE 501R
BK UNLIMITED POWER 472
GCC IRISH WHISKEY 001R

- AI bred 05.07.2021 to BOE Epic.
- Here is a powerful female sired by Trendsetter and out of the 1075 donor. The Trendsetter daughters have been our top producers for years and we are still breeding to him for that reason.
- 4125 is a producer. She has had two heifers make our production sales, and one is now a donor for Jake Franke in Texas. She has a very special heifer calf selling at her side!!
- PHAF & THF
- **LOT 102A - March 2nd heifer by Next Step.**



BOE Epic, service sire to Lot 103 and sire of Lot 103A.



BKMT Game On, service sire of Lot 104 and sire of Lot 104A.



103 BK END ON WHISKEY 7149E

Reg # 509426
 DOB: 01.09.2017
 75% Maine-Anjou
 Spring Pair

CMCC MAKERS MARK B5010
 BK YOUR WHISKEY 1075 ET

MINN HARD WHISKEY 591Y
 BK RENEGADE 5010
 BK UNLIMITED POWER 472
 GCC IRISH WHISKEY 001R

- AI bred 05.07.2021 to BOE Epic.
- Here is another one of the great 1075 daughters sired by Makers Mark. Makers Mark is a Hard Whiskey out of BK Renegade which is one of the most prolific females in the Maine breed.
- She is stout boned, moderate, and a top producer.
- PHAF & THF
- **LOT 103A - February 1st bull by BK 6958 (Epic son).**

104 BK DINAH 6160D

Reg # 473603
 DOB: 03.17.2016
 62.5% Maine-Anjou
 Spring Pair

BKRI TRENDSETTER 501T
 BK BETHANY 488

NORTHERN IMPROVEMENT 4480 GF
 BK KAS REMARKABLE 501R
 PREDATOR 19U
 BK XIDEE 069

- AI bred 05.07.2021 to BKMT Game On.
- BK Dinah 6160 is not only attractive made, she is loaded with pedigree. She is sired by the great Trendsetter, and her dam is a Predator out of BK Xidee 069, which was the \$70,000 top seller in our 2018 Sharing the Tradition Sale, selling to Randy Jones in Ohio. Power in the blood here!
- These are the first calves out of BKMT Game On, and as you can see he is going to become a very popular sire.
- PHAF & THF
- **LOT 104A - March 1st heifer by BKMT Game On.**

105 GCC BLACKBIRD 525B

Reg # 455107
 DOB: 01.20.2014
 37.5% Maine-Anjou
 Spring Pair

IRISH WHISKEY
 DUFF NS 773G BLKBIRD 733

BK ICE PICK 472J
 NTC 615 EVER READY
 OCC NEXT STEP 762N
 OCC BLACKBIRD 705D

- AI bred 05.07.2021 to BKMT Game On.
- This powerful Whiskey daughter is a top producing female. We have sold her bulls for \$5,000 to \$7,500 and her heifers have all been kept as replacements.
- PHAF & THF
- **LOT 105A - March 15th bull by BK Gunner 5039G (Epic son).**



LOT 105

106 TCTC IRISH 512

Reg # 474236
 DOB: 04.19.2015
 37.5% Maine-Anjou
 Spring Pair

IRISH WHISKEY
 TCTC ANGUS 512

BK ICE PICK 472J
 NTC 615 EVER READY
 ANGUS
 ANGUS

- AI bred 05.07.2021 to BKMT High Society 10H ET.
- This powerful female knocked it out of the park with her first calf and hasn't let off since. Her first calf was our featured Gold Standard daughter that sells as Lot 175. She produced one of our top selling bulls this spring and she has a really nice calf at her side now.
- It's hard to beat these Whiskey daughters and they are so versatile in the ways you can breed them.
- PHAC & THF
- **LOT 106A - March 17th heifer by BK Gunner 5039G (Epic son).**



Daughter of Lot 106, selling as Lot 175.



LOT 106

107 BKBP ANOTHER CLASS 325

Reg # 465861
 DOB: 02.17.2013
 75% Maine-Anjou
 Spring Pair

BK UNLIMITED POWER 472
 BK UPPER CLASS 877

DMCC LIMITED EDITION 4F
 PANNELL MISS 4072
 TNAT PARKER
 LEACHMAN BLACKBIRD 8087

- AI bred 05.07.2021 to BOE Epic.
- Here is a proven Unlimited Power daughter that has been a top producer and has a really stout Epic on her side.
- PHAF & THF
- **LOT 107A - March 1st bull by BK Epic son.**



LOT 107



LOT 108

108 BK DOUBLE MINT 6162D

Reg # 473604	BK UNLIMITED POWER 472	DMCC LIMITED EDITION 4F
DOB: 01.18.2016		PANNELL MISS 4072
75% Maine-Anjou	BK ALL STAR 328	BBBN X3 1039X
Spring Pair		BUCK U2U

- AI bred 05.07.2021 to BOE Epic.
- It's difficult to let these Unlimited Power daughters go. They have been our bred and butter for several years and when Epic came along they really proved what they could do, it's a magical cross!!
- Her dam was an extremely productive female sired by X3 and she was an incredible Yardley female.
- PHAF & THF
- **LOT 108A - March 22nd heifer by BOE Epic.**



LOT 109

109 CMCC CAMPAIGN SECRET 5036

Reg # 465219	BK TOP SECRET	BK REMEDY 346R
DOB: 09.13.2015		RSCC ROXBURY 707L
37.5% Maine-Anjou	CMCC 6809	ANGUS
Spring Pair		ANGUS

- AI bred 05.07.2021 to BKMT High Society 10H ET.
- Here is a striking Top Secret daughter that is a producer, she has produced elite bulls and females. The Top Secret daughters have proven to be the real deal for the Moore program and for us. They raise the best calves year after year.



- PHAF & THF
- **LOT 109A - February 16th bull by BKMT Genuine.**

BKMT Genuine, sire of Lot 109A.



LOT 110

110 BK EDUCATED 7153E ET

Reg # 509000	STOCK BROKER	MR HOC BROKER
DOB: 02.21.2017		BNWZ HENRIETTA SW
75% Maine-Anjou	BK UTOO 872	DMCC LIMITED EDITION 4F
Spring Pair		PANNELL MISS 4072

- AI bred 05.07.2021 to BOE Epic.
- This impressive female is ready to hit the donor pen, she is an amazing female!! Sired by Stock Broker and backed by the great BK Utoo 872. Her pedigree is proven and predictable.
- PHAF & THF
- **LOT 110A - February 12th bull by BKMT Genuine**



LOT 110A



BK Utoo 872, dam of Lot 110.

111 BK FORERUNNER 8200F ET

Reg # 509021 COLBURN PRIMO 5153 DAMERON FIRST CLASS
 DOB: 02.14.2018 SILVEIRAS SARAS DREAM 1339
 50% Maine-Anjou BK UTOO 872 DMCC LIMITED EDITION 4F
 Spring Pair PANNELL MISS 4072

- AI bred 05.07.2021 to BOE Epic.
- We are bringing you the goods with this lot! This female is nothing short of incredible phenotypically and genetically. She is sired by Primo out of the power female BK Utoo. We only had two of these sisters and they are both selling.
- When you see this heifer calf, you will know we didn't hold back when selecting this sale offering, the goods are here!
- PHAF & THF
- **LOT 105A - March 2nd heifer by BOE Epic.**



LOT 111



LOT 111A

112 BK FORECAST 8201F ET

Reg # 509022 COLBURN PRIMO 5153 DAMERON FIRST CLASS
 DOB: 02.15.2018 SILVEIRAS SARAS DREAM 1339
 50% Maine-Anjou BK UTOO 872 DMCC LIMITED EDITION 4F
 Spring Pair PANNELL MISS 4072

- AI bred 05.07.2021 to BKMT Game On.
- This female is a young donor that has only been flushed once. She is a great female with the pedigree that backs it all up, sired by Primo out of a full sister to Unlimited Power.
- Her heifer calf sired by BKMT Game On is the kind that will be a sale topper this fall. Buy with 100% confidence!!
- PHAF & THF
- **LOT 112A - March 4th heifer by BKMT Game On.**



LOT 112



LOT 112A

113 BK EACH ONE MATTERS 7141E

Reg # 508997 ALL THAT MATTERS 109B MINN HARD WHISKEY 591Y
 DOB: 01.18.2017 MINN PORSCHE 109W
 PB Maine-Anjou BK UTOO 872 DMCC LIMITED EDITION 4F
 Spring Pair PANNELL MISS 4072

- AI bred 05.07.2021 to BOE Epic.
- Here we go with a great female sired by All That Matters out of BK Utoo 872. These Utoo daughters are prime property and will certainly make money for years to come.
- She has a bull calf at her side out of WB Buck, which is a great young herd sire we purchased from Ward Brothers Angus in Missouri.
- PHAF & THF
- **LOT 113A - February 23rd bull by WB Buck.**



LOT 113



LOT 114

114 BK FANCY CLASS 8188F

Reg # 509016
 DOB: 02.01.2018
 PB Maine-Anjou
 Spring Pair

BOE EPIC
 BK UTOO 872

BOE GARTH
 MISS BOE 502R
 DMCC LIMITED EDITION 4F
 PANNELL MISS 4072

- AI bred 05.07.2021 to BOE Flex.
- Here is a full sister to our 2020 Spring Edition Sale top selling Maine heifer which sold for \$75,000. This female is sired by Epic out of BK Utoo 872, the full sister to BK Unlimited Power. She is young and her pedigree is rich in breed greats.
- These young females are special, don't overlook them because they lack maturity, time will take care of that.
- PHAF & THF
- **LOT 114A - April 1st heifer by WB Buck.**



LOT 115

115 BK EVENING SKY 709 ET

Reg # 481195
 DOB: 03.07.2017
 75% Maine-Anjou
 Spring Pair

NMR MATERNAL MADE
 BK UTOO 872

BPF MERCEDES BENZ 131U
 NMR 0-04X
 DMCC LIMITED EDITION 4F
 PANNELL MISS 4072

- AI bred 05.07.2021 to BOE Epic.
- Here is an exciting young high Maine female that is good looking and stacked with a proven pedigree.
- Her dam, BK Utoo 872, is our matriarch Maine donor, she is a full sister to Unlimited Power and her offspring produce!



TLM Next Step,
 sire of Lot 115A.

- PHAF & THF
- **LOT 115A - March 11th heifer by TLM Next Step.**



LOT 116

116 BK DEVOTION 6149D

Reg # 473595
 DOB: 03.07.2016
 62.5% Maine-Anjou
 Spring Pair

TKFF TSSC FREE WAY 23A
 BKBP ANOTHER CLASS 325

GOET I80
 G&J ERICA 3259
 BK UNLIMITED POWER 472
 BK UPPER CLASS 877

- AI bred 05.07.2021 to BKMT High Society 10H ET.
- She is sired by Free Way, which we purchased from Tim Shafer, he did an awesome job for us. Her dam is 325 which is also selling, she has a proven predictable pedigree and is in the prime of her life.
- PHAF & THF
- **LOT 116A - March 7th bull by WB Buck.**



117 WSCC YISSY 40F ET

Reg # 493331
 DOB: 04.14.2018
 50% Maine-Anjou
 Spring Pair

S A V BISMARCK 5682
 BK YISSY 189

G A R GRIDMAKER
 S A V ABIGALE 0451
 BK TOP SECRET
 BK URGENT 812

- AI bred 05.07.2021 to BOE Epic.
- This great looking Bismark daughter is out of BK Yissy 189 which is a leading donor for the Willow Springs operation and has produced many champions and top sellers for them. They purchased her in our last Sharing the Tradition Sale. Yissy is sired by Top Secret out of a full sister to Unlimited Power. Check out her heifer calf by Epic!!
- **LOT 117A - March 2nd heifer by BOE Epic.**

118 BK COUGAR 5143

Reg # 465913
 DOB: 02.04.2015
 50% Maine-Anjou
 Spring Pair

DADDYS MONEY 55Z
 GCC SIOUX MISS 3186

GOET 180
 JSC VELVET 112W
 IRISH WHISKEY
 ANGUS 430R

- AI bred 05.07.2021 to BOE Epic.
- BK Cougar 5143 is special and her progeny have demanded attention. She is the dam of Lot 1 in our 2020 Fall Premier Sale and the dam of two top selling bulls. This great female needs to be in an ET program. She has the pedigree and the phenotype to make it happen!
- This is a great female with plenty of opportunity!!
- PHAF & THF
- **LOT 118A - February 3rd bull by BOE Epic.**



119 BK ENDLESS MONEY 7183E

Reg # 509649	DADDYS MONEY 55Z	GOET I80
DOB: 01.15.2017		JSC VELVET 112W
37.5% Maine-Anjou	BK MISS 1007	MAINE
Spring Pair		ANGUS

- AI bred 05.07.2021 to BKMT High Society 10H ET.
- The female is sired by the popular Daddy's Money, which has covered the country in champions and is now widely known for his daughters that are in production. This female explains how and why these females are so popular. Her dam is a club calf bred female with power!
- PHAC & THF
- **LOT 119A - February 5th bull by BKMT Genuine.**



120 BK FAIRY 8177F

Reg # 509009	BK DYNASTY D43 ET	PVF INSIGHT 0129
DOB: 03.11.2018		BK UTOO 872
62.5% Maine-Anjou	BK ARIEL 321	BBBN X3 1039X
Spring Pair		ENLW WALLPAPER 9021W

- AI bred 05.07.2021 to BKMT High Society 10H ET.
- Her sire is BK Dynasty D43 an Insight son out of BK Utoo 872. He has done an outstanding job producing herd bulls, replacements, and elite show prospects including the Reserve Champion Female at the 2020 Fort Worth Stock Show.
- Her dam was a top producer as well, she raised several top selling show heifers and has daughters in several ET programs.
- She has a Parker daughter at her side which was Bailey's breeding decision. We discussed that we needed to go back and breed a few cows to Parker because the females are so good. This makes this heifer calf even more unique, and Bailey isn't too excited about us selling this pair.
- PHAF & THF
- **LOT 120A - February 15th heifer by TNAT Parker.**



121 BK CAPULET 5153

Reg # 466512	GOET I80	COWAN'S ALI 4M
DOB: 01.31.2015		BPF MILEY 80T
75% Maine-Anjou	BK ZIPPO 2080 ET	BK STING X8
Spring Pair		ENLW WALLPAPER 9021W

- AI bred 05.07.2021 to BOE Epic.
- This I-80 daughter is bred with power on both sides of her pedigree. Her dam is a stout rip and has raised some really good ones. I-80 has produced numerous champions and his daughters are doing the same.
- She has a heifer calf by our young herd sire BKMT Genuine and she has plenty of potential.
- PHAF & THF
- **LOT 121A - February 6th heifer by BKMT Genuine.**

122 BK FUNNEL CAKE 8213F

Reg # --
DOB: 02.16.2018
75% Maine-Anjou
Spring Pair

GCC WHISKEY C522 ET
BK CIRCUS 5148

IRISH WHISKEY
ANGUS 430R
MINN LIVE ACTION 203Y
BK ZASSY 273 ET

- AI bred 05.07.2021 to BOE Flex.
- Here is a good female with a neat look and a cool pedigree. She is sired by an Irish Whiskey son and out of a top producing Live Action daughter.
- She has an Epic bull at her side that will make a good herd bull.
- PHAF & THF
- **LOT 122A - February 5th bull by BOE Epic.**



LOT 122

123 GCC MISS WHISKEY 430E

Reg # 503756
DOB: 09.30.2017
37.5% Maine-Anjou
Spring Pair

IRISH WHISKEY
GCC MISS WHIZARD Z315

BK ICE PICK 472J
NTC 615 EVER READY
GCC WHIZARD 125W
GCC TOTAL CHILL W216

- AI bred 05.07.2021 to BKMT Game On.
- This good looking Whiskey daughter is unique in her build and is destined to be an elite donor female. Her first calf is an awesome Daddy's Money daughter that we have in our replacement pen. She has a Game On bull at her side that shows you what she can do.
- **LOT 123A - February 9th bull by BKMT Game On.**



LOT 122A





WB Buck, sire of Lot 124A.

LOT 124



BKMT Game On, service sire of Lot 125 and sire of Lot 125A.



LOT 125

124 BK FOUND DATA 8182F

Reg # 509013	BNWZ DATA BANK 1311C ET	BBBN X2 201X
DOB: 01.27.2018		BNWZ CALYPSO 28Y
75% Maine-Anjou	GCC RUSSSIAN LEGEND 465A	THE BLACK RUSSIAN
Spring Pair		ANGUS 122P

- AI bred 05.07.2021 to BOE Epic.
- There is a lot of buzz about these Data Bank females. Here is one in production and doing an awesome job.
- Her dam is a powerful female, sired by Irish Whiskey's full sib Black Russian.
- She has a sharp made Maine Angus heifer calf at her side sired by WB Buck.
- PHAF & THF
- **LOT 124A - February 17th heifer by WB Buck.**

125 GCC MISS WHISKEY E410

Reg # 493604	IRISH WHISKEY	BK ICE PICK 472J
DOB: 08.11.2017		NTC 615 EVER READY
37.5% Maine-Anjou	GCC EMBLAZON 732T	OCC EMBLAZON 854E
Spring Pair		GCC UC 4/74 P

- AI bred 05.07.2021 to BKMT Game On.
- Here is a young Irish Whiskey daughter that has donor cow written all over her. She has unlimited capabilities in the donor pen.
- She has an Epic bull calf at side that is super nice!
- **LOT 125A - February 7th bull by BKMT Game On.**

126 GCC WHISKEY ERICA 430F

Reg # 501027	IRISH WHISKEY	BK ICE PICK 472J
DOB: 01.11.2018		NTC 615 EVER READY
37.5% Maine-Anjou	OCC ERICA LASSIE 943N	OCC JOKER 620J
Spring Pair		OCC ERICA LASSIE 870G

- AI bred 05.07.2021 to BKMT Game On.
- We have had great luck over the years with the Whiskey females. We really didn't have any intent on selling these, but when we decided to keep all the yearlings and two-year-olds and sell the others, these fit that criteria.
- This Game On heifer calf will be a standout this fall.
- PHAC & THF
- **LOT 126A - February 15th heifer by BKMT Game On.**



127 BKJG MISS ANTE 78F

Reg # --	NAGE ANTE UP 26D	NAGE ANTIE UP 70Z
DOB: 02.02.2018		SMM AMERICAN JODY 06407X
75% Maine-Anjou	BK YODEL 1003	BK UNLIMITED POWER 472
Spring Pair		RSCC ROXBURY 707L

- AI bred 05.07.2021 to BOE Epic.
- Here is a great young female that was raised by our great friend and partner Jerry Gibson. She is sired by an outstanding Ante Up son from the Nagle program. Her dam is sired by Unlimited Power and out of Roxbury which has been one of the most dominant Maine females we have ever owned.
- **LOT 127A - March 3rd bull by BK Ferris.**



128 GCC BARBARA E47Z

Reg # 503884	CERVEZA	IRISH WHISKEY
DOB: 10.13.2017		MISS CHILL 1829
37.5% Maine-Anjou	BUF BARBARA 8380	BASIN FRANCHISE P142
Spring Pair		J BAR 7 BARBARA 5603

- AI bred 05.07.2021 to BKMT High Society 10H ET.
- She is sired by the maternal powerhouse Cerveza, his daughters are the real deal and have produced countless champions. We are keeping her 2020 Daddy's Money heifer for her replacement.
- PHAF & THF
- **LOT 128A - March 20th bull by BK Gunner 5039G (Epic son).**





129

BK FANCY CLASS 8188F

Reg # 509016	BOE EPIC	BOE GARTH
DOB: 02.01.2018		MISS BOE 502R
62.5% Maine-Anjou		TNAT PARKER
Spring Pair	BK UPPER CLASS 877	LEACHMAN BLACKBIRD 8087

- AI bred 05.07.2021 to BOE Flex.
- We don't have many of these Epic daughters to offer, but we are proud of those that we have. She is that magical cross out of an Unlimited Power X Parker daughter.
- PHAF & THF
- **LOT 129A - February 15th heifer by BKMT Game On.**



LOT 129

BOE Flex, service sire of Lots 129 & 130.



LOT 130



LOT 131

130 BK FOLKSY 8193F

Reg # 509020	BOE EPIC	BOE GARTH
DOB: 01.31.2018		MISS BOE 502R
PB Maine-Anjou		BBBN X3 1039X
Spring Pair	BK ZADIE 219	BK UTOO 872

- AI bred 05.07.2021 to BOE Flex.
- This young Epic daughter has added look and power. Her dam is a great female sired by X3 and out of BK Utoo.
- Here is the future, don't miss the opportunity.
- PHAF & THF
- **LOT 130A - March 16th bull by WB Buck.**

131 BK FANTASY DESIRES 8169F

Reg # 509131	KDJ FULL HOUSE 645	DUFF NAPOLEAN 232
DOB: 02.15.2018		KDJ HEAVEN 026
25% Maine-Anjou		BKRI TRENDSETTER 501T
Spring Pair	BK DARK DESIRES 6143D	BK 4JB BOPPER 445

- AI bred 05.07.2021 to BKMT Game On.
- Her sire, Full House, is a bull we used on first calf heifers, he's good looking, moderate, and maternal bred. As you can see, his daughters are the right kind.
- Her dam is sired by Trendsetter out of a Presto daughter.
- PHAF & THF
- **LOT 131A - April 2nd twin heifers by BK Gunner 5039G (Epic son).**

132 BK FLASHDANCE 8170F

Reg # 509132	KDJ FULL HOUSE 645	DUFF NAPOLEAN 232
DOB: 03.15.2018		KDJ HEAVEN 026
25% Maine-Anjou	BK DEVOTION 6149D	TKFF TSSC FREE WAY 23A
Spring Pair		KBP ANOTHER CLASS 325

- AI bred 05.07.2021 to BKMT Game On.
- These Full House daughters are making awesome cows. They are young and haven't reached maturity yet, but they are the right kind and will make you money.
- Her dam is sired by Free Way and out of an Unlimited Power daughter.
- PHAF & THF
- **LOT 132A - February 15th heifer by BKMT Game On.**



133 BK EVERLASTING 8096

Reg # --	NMR MATERNAL MADE	BPF MERCEDES BENZ 131U
DOB: 02.20.2018		NMR 0-04X
25% Maine-Anjou	BK MISS 1007	MAINE
Spring Pair		ANGUS

- AI bred 05.07.2021 to BKMT High Society 10H ET.
- This young female is sired by Maternal Made. She produced a show heifer for her first calf and now has a really nice Epic daughter at her side.
- PHAF & THF
- **LOT 133A - February 12th heifer by BOE Epic.**



134 BK BRING IT 448

Reg # 466033	BK STING X8	YELLOW JACKET
DOB: 02.07.2014		GCC IRISH WHISKEY 001R
37.5% Maine-Anjou	EUCHEE CREEK RASCAL 27R	DOCTOR WHO
Spring Pair		BK MS 3027

- AI bred 05.07.2021 to Here I Am.
- This smokey female is sired by Sting and out of a great Dr Who female. She has been a great producer for both herd bulls and show heifers.
- PHAF & THF
- **LOT 134A - March 4th heifer by WB Buck.**





LOT 135



Daughter of Lot 135.



LOT 136A



LOT 136

135 BK FOUNDATION 452

Reg # --	FOUNDATION (SIM)	ENCORE
DOB: 04.11.2014		ANGUS
Commercial		NORTHERN IMPROVEMENT 4480 GF
Spring Pair	B3 MISS 52	ANGUS

- AI bred 05.07.2021 to BKMT High Society 10H ET.
- 452 has been one of the most popular females of the early visitors, she is massive bodied, level hiped, great structured, and good looking.
- She has produced multiple females for our sales that have sold extremely well including an \$8,600 Epic heifer in 2019.
- PHAF & THF
- **LOT 135A - March 20th heifer by BK Gunner 5039G (Epic son).**

136 B3 KOJACK 360

Reg # --	KASS KOJACK S45	SPARROWS MADRID 7M
DOB: 03.01.2013		MCC JACQUE
Commercial		CHI CROSS
Spring Pair	A60	CHAROLAIS

- AI bred 05.07.2021 to Here I Am.
- Here is one of the most intriguing females in the offering, she is massive built, good looking, great structured, and awesome uddered.
- She has a Monopoly bull calf at her side that will definitely generate some quick cash!!
- **LOT 136A - February 14th bull by Monopoly.**

137 BK EVENING GOLD 7181

Reg # --		GCC TOTAL RECALL 806T
DOB: 02.05.2017	GCC GOLD STANDARD	X615
Commercial Maine		OCC JUANADA 925R
Spring Pair	GCC JUANADA B569	GCC MAVERICK 9066P
		GCC JUANADA 923Y

- AI bred 05.07.2021 to BKMT High Society 10H ET.
- These Gold Standard females are special, they are built right from the ground up with power, body, and looks they have it all.
- Her dam is a stout female with lots of rib and volume. She has a sharp Gunner heifer at her side.
- PHAF & THF
- **LOT 137A - April 1st heifer by BK Gunner 5039G.**



138 BK FRILL 8202

Reg # --		B C LOOKOUT 7024
DOB: 02.15.2018	CIRCLE M TEJAS	J&J QUEEN 414
Commercial		MAINE
Spring Pair	BK 112	ANGUS

- AI bred 05.07.2021 to BOE Epic.
- We bred a few cows to Tejas a few years back and he did a really good job. We sold some as show prospects and kept a few as replacements. It looks like we should have kept them all, they are making great cows.
- **LOT 138A - March 11th bull by BK Gunner 5039G (Epic son).**



139 C&C MISTY 5016C

Reg # 18242115		SAV BRILLIANCE 8077
DOB: 01.08.2015	PVF INSIGHT 0129	PVF MISSIE 790
PB Angus		DAMERON FIRST CLASS
Spring Pair	C&C MISTY 1194	EXAR MISS EXT 3095

- AI bred 05.07.2021 to BOE Epic.
- This is a purebred Angus female we have been breeding Maine and it works every time! Her bull calves are standouts in quality and performance, and her daughters are outstanding.
- **LOT 139A - February 14th heifer by BOE Epic.**





140 EXAR RITA 6958

Reg # 18422622	EXAR CONSENSUS 5072B	CONNELLY CONSENSUS 7229
DOB: 03.15.2016		SITZ HENRIETTA PRIDE 643T
PB Angus	TLC RITA 037	N BAR EMULATION EXT
Spring Pair		SOUTHERN RITA 747 3562

- AI bred 05.07.2021 to BOE Epic.
- Rita is a well made Angus female we have been breeding Maine and getting along great. She has raised two awesome herd bulls and one nice female for us.
- She has a sharp Epic calf at her side.
- **LOT 140A - March 17th bull by BOE Epic.**



141 BK FAR SIGHT 8195

Reg # --	PVF INSIGHT 0129	SAV BRILLIANCE 8077
DOB: 3.15.2018		PVF MISSIE 790
PB Angus	DAMERON NORTHERN MISS 2288	PVF NEW HORIZON 001
Spring Pair		DAMERON NORTHERN MISS 3114

- AI bred 05.07.2021 to BOE Epic.
- This purebred Angus female has a great maternal look with a great pedigree. Her dam has done an awesome job producing top females and powerful herd bulls.
- She has an Epic daughter at her side that will definitely make money this fall.
- **LOT 141A - March 3rd heifer by BOE Epic.**

BOE Epic, service sire of Lot 141 & sire of Lot 141A.



142 C&C EVERELDA ENTENSE 4012

Reg # 17859057	EXAR BLUE CHIP 1877B	DAMERON FIRST CLASS
DOB: 01.16.2014		GREENS PRINCESS 1012
PB Angus	EXAR EVERELDA ENTENSE 0249	NORTHERN IMPROVEMENT 4480 GF
Spring Pair		EXAR EVERELDA EXTENSE 83137

- AI bred 05.07.2021 to BOE Epic.
- This purebred Angus female has worked great for us, she has produced numerous herd bulls and outstanding females.
- She has an extremely good Maine Angus heifer at her side by Epic.
- **LOT 142A - March 2nd heifer by BOE Epic.**

MAINE-ANJOU &
MAINETAINER
Fall Breds



Daughter of Lot 143.



Daughter of Lot 143.



Daughter of Lot 143.



143 CMCC BARFLY 407

Reg # 451372
DOB: 04.21.2014
75% Maine-Anjou
Fall Bred

BK UNLIMITED POWER 472
BK YAT KAT 126

DMCC LIMITED EDITION 4F
PANNELL MISS 4072
YELLOW JACKET
GCC IRISH WHISKEY 001R

- Bred to Here I Am; due 09.02.2021.
- This smoke female is an unbelievable female with amazing power, stunning look, great structure, and an awesome udder. She is sired by Unlimited Power and out of BK Yat Kat which was the 2012 National Champion MaineTainer female. We flushed her for the first time this fall, she needs to spend more time at the ET center this year.
- She is an elite producer, her 2020 heifer calf sold for \$17,000 in the 2021 Spring Edition Sale, her 2019 bull sold for \$7,250, and her 2018 heifer sold for \$6,000.
- She sells bred to Here I Am, no doubt this will be a homerun!!
- PHAF & THF

144 CMCC COLOR RUN 512

Reg # 459638
DOB: 03.20.2015
75% Maine-Anjou
Fall Bred

BK UNLIMITED POWER 472
BK RENEGADE 5010

DMCC LIMITED EDITION 4F
PANNELL MISS 4072
TNAT PARKER
PAWS UP LASS 2537

- Bred to BOE Epic; due 09.22.2021.
- Here is a featured donor female. She is sired by Unlimited Power out of the great BK Renegade 5010, which makes her a full sib to multiple National Champion females. Her build is perfect and her pedigree is flawless.
- She is a proven producer of great ones. Her three heifer calves averaged \$7,000 in our 2021 Spring Edition Sale, her two 2019 heifers averaged \$6000, and her 2018 heifer sold for \$25,000. That's a \$9,600 average on six heifer calves, she can generate the cash!!
- PHAF & THF



Daughter of Lot 145.

LOT 145

Power Cows



LOT 146

145 CMCC CATCHING Z'S 516

Reg # 459636
 DOB: 03.03.2015
 75% Maine-Anjou
 Fall Bred

BK BOAK Z MAN Z1065
 CMCC MISS 070

BBBN X3 1039X
 GF JENNA 65L
 BK TOP SECRET
 ANGUS

- Bred to Data Bank; due 09.02.2021.
- This Z Man daughter is a stunning individual, she is long necked, big bodied, square hipped, and stout made. Her sire is sired by X3 out of GF Jenna 65L a remarkable female. Her dam is a Top Secret daughter with the same look and power.
- She has had two daughters make the sale and recently her 2020 heifer calf sold for \$8000.
- We flushed this female this past fall for the first time, she needs to be flushed again after she has her Data Bank calf in the fall.
- PHAF & THF

146 BK-MTF ALICE 307

Reg # 438102
 DOB: 05.01.2013
 75% Maine-Anjou
 Fall Bred

BKRI TRENDSETTER 501T
 BK BOAK YANTIS 112

NORTHERN IMPROVEMENT 4480 GF
 BK KAS REMARKABLE 501R
 SLC SOONER 101M
 GF JENNA 65L

- Bred to BOE Epic; due 10.02.2021.
- Here is a true power cow, she is massive built with a great look. Her pedigree is exceptional, she is sired by Trendsetter out of Yantis which is a Sooner out of GF Jenna 65L one of the very best Maine cows we ever owned. You can build a cow herd with this top female.
- PHAF & THF



WB Buck, service sire of Lot 147.

LOT 147



BK Utoo 872, dam of Lot 148.



LOT 148

147 BK ENDOWED 7554E

Reg # 509006	BKRI TRENDSETTER 501T	NORTHERN IMPROVEMENT 4480 GF
DOB: 09.06.2017		BK KAS REMARKABLE 501R
25% Maine-Anjou	BK CATALINA 5146	GCC LEGACY 647X
Fall Bred		GCC BLACK RUSSIAN 480A

- Bred to WB Buck; due 10.02.2021.
- The Trendsetter daughters have always been our favorite cows, they are quality made, nice sized, great mothers, and excellent producers.
- Her dam is sired by GCC Legacy out of a Black Russian daughter, Black Russian is a full brother to Irish Whiskey.

148 BK ZADIE 219

Reg # 428446	BBBN X3	GVC STATESMAN
DOB: 05.02.2012		BOSS BEAUTY 84M
PB Maine-Anjou	BK UTOO 872	DMCC LIMITED EDITION
Fall Bred		PANNELL MISS 4072

- Bred to BOE Epic; due 09.02.2021.
- This great female has been a favorite since birth and she is the reason her dam went to ET the first time. She is great looking, moderate framed, stout, and a producer. Sired by X3 out of BK Utoo she doesn't miss.
- We have two of her daughters in our replacement pen and they are really good.
- She sells bred to Epic and this is sure to be special.
- PHAF & THF



LOT 149



BNWZ Data Bank 1311C, service sire of Lot 150.



LOT 150

149 BK ALSO WHISKEY 3265

Reg # 465883	BK WHISKEY 77N	IRISH WHISKEY
DOB: 03.01.2013		BK KRYSTAL 008K
37.5% Maine-Anjou		ANGUS
Fall Bred	1005	ANGUS

- Bred to BOE Epic; due 09.27.2021.
- This good looking Irish Whiskey granddaughter has the added body, shape, and power. She is a true maternal female that consistently makes them good.
- She has an Epic baby coming this fall.

150 GCC DIXIE ERICA B553

Reg # 471364	GCC ECC DUBAI 56S	IRISH WHISKEY
DOB: 10.20.2014		JUSTIN'S BECKY
37.5% Maine-Anjou		OCC MISSING LINK 830M
Fall Bred	OCC DIXIE ERICA 675R	OCC DIXIE ERICA 601M

- Bred to BNWZ Data Bank 1311C; due 09.02.2021.
- This powerful Dubai daughter is square hipped, deep sided, and attractive made. She sells bred to Data Bank, which has had a banner year in the show ring, and is producing top sellers all across the country.
- PHAF & THF

151 BK EMBELLISHED 7151E ET

Reg # 508999
DOB: 02.08.2017
75% Maine-Anjou
Fall Bred

NMR MATERNAL MADE
BK UTOO 872

BPF MERCEDES BENZ 131U
NMR 0-04X
DMCC LIMITED EDITION 4F
PANNELL MISS 4072

- Bred to WB Buck; due 09.22.2021.
- We are stepping it up a notch with this elite female, she has all the look and power you can ask for. She is sired by Maternal Made which has dominated in the show ring and his daughters are some of the most sought after females in the country. Her dam, BK Utoo, has had a major influence in our program producing champions, herd bulls, and elite donors.
- She sells bred for a MaineAngus calf sired by WB Buck.
- PHAF & THF



LOT 151

152 BK EVENING STAR 710 ET

Reg # 481196
DOB: 03.08.2017
75% Maine-Anjou
Fall Bred

NMR MATERNAL MADE
BK UTOO 872

BPF MERCEDES BENZ 131U
NMR 0-04X
DMCC LIMITED EDITION 4F
PANNELL MISS 4072

- Bred to BOE Epic; due 10.02.2021.
- This elite female is sired by the popular Maternal Made out of the proven donor BK Utoo. You don't find females like this that are for sale very often, take advantage of the opportunity!!
- PHAF & THF



BK Utoo 872 dam of
Lots 151, 152 & 153.



LOT 152

153 BK ENTRUSTED 7195E ET

Reg # 509007
DOB: 01.17.2017
75% Maine-Anjou
Fall Bred

NMR MATERNAL MADE
BK UTOO 872

BPF MERCEDES BENZ 131U
NMR 0-04X
DMCC LIMITED EDITION 4F
PANNELL MISS 4072

- Bred to BKMT Genuine; due 09.02.2021.
- These Maternal Made daughters out of BK Utoo are incredible. They are high percent Maines with the build of Mainetainers, great look, soft middled, and lots of power.
- She has been outstanding her first two years of production, she raised a powerful herd bull, and we also have a daughter in our replacements. The only reason we are selling one like her is because we have her daughter.
- PHAF & THF



LOT 153



154 BK ENGAGED 7164E

Reg # 509002	NMR MATERNAL MADE	BPF MERCEDES BENZ 131U
DOB: 01.30.2017		NMR 0-04X
62.5% Maine-Anjou	JJN MISS 14A	BK UPTON 423U
Fall Bred		EUC MISS KAREN 7127

- Bred to WB Buck; due 10.02.2021.
- This female is smooth made, great necked, and soft middled. She is sired by the great Maternal Made and out of a BK Upton daughter, BK Upton.
- PHAF & THF



155 CMCC BY THE BOOK 4025

Reg # 455345	BK TOP SECRET	BK REMEDY 346R
DOB: 09.02.2014		RSCC ROXBURY 707L
37.5% Maine-Anjou	CMCC 6966S	ANGUS
Fall Bred		ANGUS

- Bred to BOE Epic; due 09.02.2021
- We are huge fans of the Top Secret daughters, they are awesome cows that produce extreme quality.
- Her 2019 Data Bank heifer sold for \$8250 in our 2020 Spring Edition Sale.
- PHAF & THF



156 ML HORIZON

Reg # 447823	IRISH WHISKEY	BK ICE PICK 472J
DOB: 03.01.2014		NTC 615 EVER READY
75% Maine-Anjou	BBR WAVERLY 996W	BFW MITTEN MAN Q35P
Fall Bred		MCF MISS JOLT 216JP

- Bred to BKMT Game On; due 09.02.2021.
- Here is a stout built, good looking high Maine Irish Whiskey female. She has loads of deep maternal power on both sides of her pedigree.
- She produced a \$5,600 female in our 2020 Spring Edition Sale and sells bred to the hot young sire, BKMT Game On.
- PHAC & THF

157 CMCC CROWD CONTROL 5005 ET

Reg # 465231
 DOB: 09.18.2015
 37.5% Maine-Anjou
 Fall Bred

DADDYS MONEY 55Z	GOET 180
BK RENEGADE 5010	JSC VELVET 112W
	TNAT PARKER
	PAWS UP LASS 2537

- Bred to BOE Epic; due 09.22.2021.
- This female's pedigree is jam packed with greatness. She is sired by the popular Daddy's Money and her dam is the breed legend BK Renegade 5010. Both her sire and dam have produced numerous National Champions.
- She has produced two heifers that sold in our Spring Edition Sales, and only the very top end make that sale.
- PHAF & THF



Daughter of Lot 157.



LOT 157

158 GCC JUANDA B569

Reg # 472286
 DOB: 09.10.2014
 37.5% Maine-Anjou
 Fall Bred

GCC MAVERICK 9066P	DRAFT PICK
GCC JUANADA 923Y	MS. COLDFRONT 13
	OCC EMBLAZON 854E
	OCC JUANADA 607N

- Bred to Data Bank; due 09.02.2021.
- Here is a stout built Maverick daughter with body and maternal design. She is bred to Data Bank which should be an awesome mating.
- PHAF & THF



LOT 158

159 BK EMPHASIS 7196E ET

Reg # 509008
 DOB: 02.03.2017
 PB Maine-Anjou
 Fall Bred

ALL THAT MATTERS 109B	MINN HARD WHISKEY 591Y
BK UTOO 872	MINN PORSCHE 109W
	DMCC LIMITED EDITION 4F
	PANNELL MISS 407Z

- Bred to BKMT Genuine; due 09.02.2021.
- This All That Matters female is massive hipped, big bellied, cool necked, with huge bone and feet. The Utoo daughters produce and make money.
- PHAF & THF



LOT 159



Here I Am, service sire of lot 160.

160 BK FRESH WHISKEY 8556F

Reg # 509028	BK DYNASTY D43ET	PVF INSIGHT 0129
DOB: 09.20.2018		BK UTOO 872
37.5% Maine-Anjou	BK AL RIGHT WHISKEY 3256	BK WHISKEY 77N
Fall Bred		ANGUS

- Bred to Here I Am; due 09.02.2021.
- This outstanding young MaineTainer female is sired by Dynasty which is by Insight out of BK Utoo 872, he did an incredible job siring cattle with look, body, power, and maternal value. She sells bred to Here I Am which has been the dominating sire in the club calf business the past couple of years. She is bred for a quick return on your investment.



LOT 161

161 CMCC ALWAYS ON TIME 3018

Reg # 444182	GOET I80	COWAN'S ALI 4M
DOB: 10.22.2013		BPF MILEY 80T
PB Maine-Anjou	BK TIME MACHINE 7110	DMCC LIMITED EDITION 4F
Fall Bred		PANNELL MISS 4072

- Bred to BOE Epic; due 09.02.2021
- This good looking I-80 daughter has some extra punch to her combined with extension and power. Her dam is a full sister to Unlimited Power and is the dam of the \$100,000 top selling Epic daughter in 2018.
- Epic has been working great on the I-80 daughters!
- PHAF & THF



LOT 162

162 BKBP ALISA 363

Reg # 441886	GOET I80	COWAN'S ALI 4M
DOB: 04.02.2013		BPF MILEY 80T
PB Maine-Anjou	BK BP YES EM 136	BK UNLIMITED POWER 472
Fall Bred		CBOF BOSS ROSE 89L

- Bred to BOE Epic; due 09.02.2021.
- This purebred female is sired by I-80 out of an Unlimited Power X Fear This dam, she has all the look and pedigree you can ask for.
- Her 2017 heifer calf sold for \$30,000 in our 2018 Spring Edition Sale. She is due to Epic so get ready for a special one!
- PHAF & THF

163 BK AFTERSHOCK 308

Reg # 437876	GOET I80	COWAN'S ALI 4M
DOB: 03.08.2013		BPF MILEY 80T
PB Maine-Anjou	BK YANESSA 198	HAA WISDOM 505S
Fall Bred		GCC MISS WHISKEY 57R

- Bred to BKMT Genuine; due 09.02.2021.
- She is sired by I-80 out of BK Yanessa 198 which is a maternal sister to BK Xikes X59.
- Her 2016 and 2017 bulls were top selling herd bulls, and her 2019 bull sold in our online bull sale. Her 2018 heifer calf sold in our 2019 Spring Edition Sale for \$10,500 and her 2020 heifer calf sold in the 2021 Leading Ladies Sale. She doesn't miss!!
- PHAF & THF



164 BK CHRISTINA 5128C

Reg # 465939	JPF TEAM BLAKE 2A	GOET I80
DOB: 08.01.2015		JSC VELVET 112W
75% Maine-Anjou	ML HORIZON	IRISH WHISKEY
Fall Bred		BBR WAVERLY 996W

- Bred to BOE Epic; due 09.02.2021.
- She is sired by a full brother to Daddy's Money and is a moderate framed, stout hipped, female, with a cool look. Her dam, which is also selling, is a stunning Irish Whiskey daughter.
- Her 2020 Epic heifer sold for \$8,500 in our 2021 Spring Edition Sale and she sells bred back the same way.



Daughter of Lot 164.



165 WSCC CHLOE 84E

Reg # 480939	OHL CORNERSTONE 0182C	PLAINVIEW PRIDE C123
DOB: 05.14.2017		OHL ANGEL 7171
37.5% Maine-Anjou	BBR CHLOE 563C	BBBN X2 201X
Fall Bred		JSC CHARM 96X

- Bred to BOE Epic; due 10.18.2021.
- This is a beautifully designed maternal bred female, she has a great deal of cow power in her pedigree. She sells bred to Epic and this should be a perfect match!!
- PHAF & THF





LOT 166

166 BK FAWN 8550F

Reg # 509121
 DOB: 09.01.2018
 37.5% Maine-Anjou
 Fall Bred

SAV BRILLIANCE 8077
 BK DAWN 6226D

SAV BISMARCK 5682
 SAV BLACKCAP MAY 5270
 ALL THAT MATTERS 109B
 GCC BLACK RUSSIAN 545A

- Bred to In God We Trust; due 09.02.2021.
- Sired by Brilliance this female will mature into an awesome cow, she's young but she has the quality.
 - She is bred to In God We Trust which has dominated the show ring the past couple of years.
 - PHAF & THF



Daughter of Lot 166.



LOT 167

167 BK FIGMENT 8552F

Reg # 509042
 DOB: 08.27.2018
 50% Maine-Anjou
 Fall Bred

SAV BRILLIANCE 8077
 BK TYRA 708

SAV BISMARCK 5682
 SAV BLACKCAP MAY 5270
 BKRF POWER HOUSE 158P
 BOE MISS TYRA

- Bred to BOE Epic; due 09.02.2021
- This good looking young female is sired by the proven Angus bull Brilliance. Her dam was an awesome female that was a many time champion and a top producer.
- PHAF & THF



LOT 168

168 BK ENRICHED 7551E

Reg # 509040
 DOB: 09.07.2017
 25% Maine-Anjou
 Fall Bred

SAV BRILLIANCE 8077
 CMCC CASH COW 541

SAV BISMARCK 5682
 SAV BLACKCAP MAY 5270
 I DELIVER
 CMCC MISS 922

- Bred to BOE Epic; due 09.02.2021.
- Sired by the proven maternal sire Brilliance out of an I Deliver daughter that goes back to Backdraft on the bottom side of her pedigree. She sells bred to Epic for a quick return on your investment.

169 BK ENCHANTMENT 7054E ET

Reg # 509005
 DOB: 09.15.2017
 PB Maine-Anjou
 Fall Bred

BK XIKES X 59
 BK UTOO 872

BK UNLIMITED POWER 472
 GCC MISS WHISKEY 57R
 DMCC LIMITED EDITION 4F
 PANNELL MISS 4072

- Bred to WB Buck; due 10.07.2021.
- This female packs a very interesting pedigree. She is sired by BK Xikes an Unlimited Power son and she is out of BK Utoo which is a full sister to Unlimited Power. She is line bred for greatness!! She sells bred to WB Buck for a Maine Angus calf.
- PHAF & THF

WB Buck, service sire
 to Lot 169.



LOT 169

170 BK FERN 8564F

Reg # 509030
 DOB: 08.27.2018
 75% Maine-Anjou
 Fall Bred

BK XIKES X 59
 BKJJ AMPLE 396

BK UNLIMITED POWER 472
 GCC MISS WHISKEY 57R
 BKRI TRENDSETTER 501T
 BK4J YATER 147

- Bred to Here I Am; due 09.02.2021.
- The Xikes offspring are impressive cattle with great looks and quality. His daughters have proven to be excellent producers and his sons are standout herd bulls.
- Her dam is rich in proven maternal genetics, she is sired by Trendsetter out of an Unlimited Power daughter.
- She sells bred to the popular sire of champions Here I Am.



LOT 170

171 BK ELEGANT GIRL 7550

Reg # --
 DOB: 03.15.2017
 37.5% Maine-Anjou
 Fall Bred

DUNRITE JESSE JAMES
 CMCC COLOR RUN 512

JESSE JAMES
 HARD WHISKEY
 BK UNLIMITED POWER 472
 BK RENEGADE 5010

- Bred to BOE Epic; due 09.02.2021.
- Here is a daughter of CMCC Color Run 512, she has the same power and quality as her dam with more look. She is bred to Epic and we know how well that worked on her dam!!
- PHAF & THF



LOT 171



LOT 172

172 5035

Reg # -- L185
 DOB: 9.01.2005
 Angus
 Fall Bred 3033

PUREBRED ANGUS

PUREBRED ANGUS

- Bred to BOE Epic; due 09.02.2021.
- This Angus female has a striking look with a vast amount of maternal power. We have been breeding her Maine and that has worked exceptionally well. She sells bred to Epic which should produce perfection.



LOT 173

173 BK FINE WHISKEY 8175F

Reg # 509124
 DOB: 2.19.2018
 37.5% Maine-Anjou
 Fall Bred

GCC WHISKEY C522
 BK BRING IT 448

IRISH WHISKEY
 ANGUS 430R
 BK STING X8
 EUCHEE CREEK RASCAL 27R

- Bred to Here I Am; due 09.02.2021.
- This female is loaded with style, balance, body, and substance. She is young and not as mature, but she will be an amazing female when she reaches maturity. Sired by an outstanding Irish Whiskey son and out a proven BK Sting daughter. She sells bred to the club calf sensation Here I Am, this will be a money maker!!



Service Sires ~

The Fall Calving Maine-Anjou & MaineTainer cows were exposed to the following bulls ...

- BOE Epic
- WB Buck

174 WSCC QUEENIE 137F ET

Reg # 395423	COLBURN PRIMO 5153	DAMERON FIRST CLASS
DOB: 04.14.2018		SILVEIRAS SARAS DREAM 1339
14.2% Chianina	BPF PRINCESS 503U	TMH KINGPIN
Fall Bred		FBF MS MAIL ME 055M

- Bred to WB Buck; due 10.02.2021
- Here is the only high percent Chianina female in the offering. She is a striking individual and is backed by proven genetics. Her dam, BPF Princess 503U, has produced countless champions and is a highly respected female in the breed.
- She sells bred to the purebred Angus sire WB Buck, this will be good!!
- PHAF & THF



LOT 174

175 BK EXCITEMENT 7189

Reg # 505114	GCC GOLD STANDARD X615	GCC TOTAL RECALL 806T
DOB: 02.03.2017		OCC JUANADA 925R
Commercial Maine	TCTC IRISH 512	IRISH WHISKEY
Fall Bred		ANGUS

- Bred to BOE Epic; due 10.02.2021.
- They don't come more impressive than this absolutely amazing female. She doesn't carry a registration paper, but that is about all she doesn't possess. With her great look, combined with power, structure, and body shape, she is something else!! Her pedigree is built maternal from the ground up, there is reliability built in this one.
- She sells bred to Epic which should be a rock star mating. Let her calve, then flush her anyway your heart desires, and I bet it will work.



LOT 175

176 BK CATALINA 5146

Reg # --	GCC LEGACY 647X	GCC TOTAL RECALL 806T
DOB: 02.01.2015		GCC MISS WHISKEY 57R
Commercial Maine	GCC BLACK RUSSIAN 480A	THE BLACK RUSSIAN
Fall Bred		GCC UC 2/521

- Bred to WB Buck; due 10.07.2021.
- Here is sharp looking extra maternal female sired by Legacy out of a powerful Black Russian daughter. She will be versatile in the ways you can mate her and will do a great job.



LOT 173

Frozen Genetics



SR Dominate 308F



C Starburst 4029 ET

201 3 IVF EMBRYOS REVERSE SORTED FOR FEMALES

Selling one package of three IVF Embryos.

Hereford

SR DOMINATE 308F ET

C STARBURST 4029 ET

BCC DOMINATOR 619D

CHURCHILL LADY 1162Y ET

NJW 98S R117 RIBEYE 88X ET

HHR PAY IN GOLD 1008X ET

- This is a mating of two great individuals. 4029 has been an anchor donor in our program the past few years producing top sellers, donors, and herd bulls. She is stacked deep with proven cow families and legendary sires. This is the first time she has been mated to SR Dominate and we have no doubt this will be her best offspring.



SR Dominate 308F



HAPP Final Point 1816 ET

202 3 IVF EMBRYOS REVERSE SORTED FOR FEMALES

Selling one package of three IVF Embryos.

Hereford

SR DOMINATE 308F ET

HAPP FINAL POINT 1816 ET

BCC DOMINATOR 619D

CHURCHILL LADY 1162Y ET

NJW 98S R117 RIBEYE 88X ET

CRANE STYLE POINTS 945

- HAPP Final Point 1816 is a new donor to our program. She is sired by 88X and out of Style Points the dam of Kool Aid Points. Her first heifer calf sold for \$60,000 and her first ET calves are on the ground and are quite impressive. The first SR Dominate calves were born last fall and they exceeded all expectations, they are stout, good looking, with unmatched quality.
- You can tie in here with confidence!



SR Dominate 308F



Blacktop Vicky 028

203 3 IVF EMBRYOS REVERSE SORTED FOR FEMALES

Selling one package of three IVF Embryos.

Hereford

SR DOMINATE 308F ET

BLACKTOP VICKY 028

BCC DOMINATOR 619D

CHURCHILL LADY 1162Y ET

BR MOLER ET

SSF VICKY 631

- These embryos have as much earning potential as any we will be offering. Sired by SR Dominate, which was the 2020 National Western Champion Horned Bull, and is one of the most sought after herd sires in the breed. The donor dam Blacktop Vicky 028 was a great champion and has produced countless National Champions and herd sires.

204

3 IVF EMBRYOS REVERSE SORTED FOR FEMALES

Selling one package of three IVF Embryos. Hereford

SR DOMINATE 308F ET	BCC DOMINATOR 619D
	CHURCHILL LADY 1162Y ET
KJ BJ 274S MISTY 969A ET	BR DM TNT 7010 ET
	KJ 2054 MISTY 274S ET

- We purchased 969A from the Jensen operation to add to our donor battery. She has a wealth of proven genetics and an awesome track record in production.
- These embryos are sired by Standout. We have our first Standout calves on the ground and are very pleased with them. Check out his calves selling at the side of their dams in this sale, you will absolutely become interested in these embryos.



SR Dominate 308F



KJ BJ 274S Misty 969A

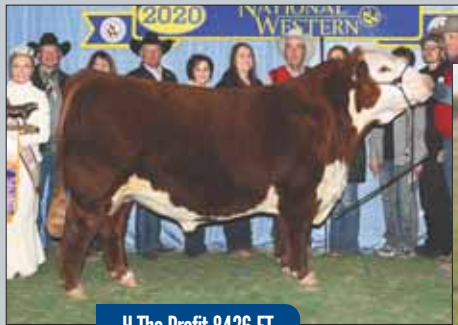
205

3 IVF EMBRYOS REVERSE SORTED FOR FEMALES

Selling one package of three IVF Embryos. Hereford

H THE PROFIT 8426 ET	CHURCHILL PILGRIM 632D ET
	RST GAT NST Y79D LADY 54B ET
BK COOL BEANS 5707C	VH MR BG 1104
	HAPP KOOL AID POINTS 1218 ET

- The Profit offspring are impressive, we have never bred to a Hereford bull that adds power, body, and substance like he does. They are good looking, however, they are deep and stout too!
- With Cool Beans track record, this mating should be awesome!!



H The Profit 8426 ET



BK Cool Beans 5707C

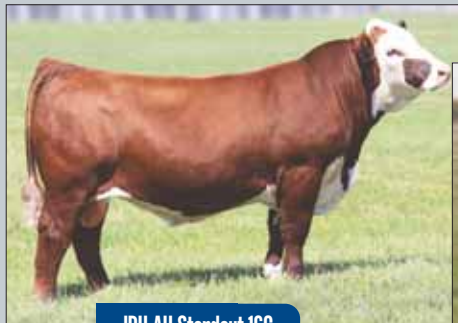
206

3 IVF EMBRYOS REVERSE SORTED FOR FEMALES

Selling one package of three IVF Embryos. Hereford

JDH AH STANDOUT 16G	JDH 11B STUD 3134 63E
	JDH AH MS 34X VICTOR 33Z45C
BK COOL BEANS 5707C	VH MR BG 1104
	HAPP KOOL AID POINTS 1218 ET

- BK Cool Beans 5707 didn't waste any time proving herself in production. Her first ET calves won three divisions at the JNHE, Grand Horned Female at Tulsa, Reserve Grand at OYE, and Grand Horned bull at the 2021 Cattlemen's Congress in OKC.
- This mating should be her best yet, with the power Standout has to offer, along with his maternal value, this will be exciting.



JDH AH Standout 16G



BK Cool Beans 5707C

207

3 IVF EMBRYOS REVERSE SORTED FOR FEMALES

Selling one package of three IVF Embryos. Hereford

JDH AH STANDOUT 16G	JDH 11B STUD 3134 63E
	JDH AH MS 34X VICTOR 33Z45C
H CHEZ CABERNET 462B ET	H WCC/WB 668 WYARNO 9500 ET
	R SWEET RED WINE 039

- Here is an interesting mating sired by JDH AH Standout. He was the lead sire for the Adkins/ Delaney 2020 Denver pen and a top seller in the 2020 Mile High Sale where he was purchased by Moore Cattle Co. We were extremely impressed by Standout and used him very heavily in 2020.
- The donor dam 462 was the Reserve Champion Horned female at the 2015 JNHE, she is a full sister to the great Full Throttle and has been a leading donor in our program. Her offspring have a striking look with power and substance.



JDH AH Standout 16G



H CHEZ Cabernet 462B



H The Profit 8426



Womack Lady Rachael 2216

208

3 IVF EMBRYOS REVERSE SORTED FOR FEMALES

Selling one package of three IVF Embryos.
Hereford

H THE PROFIT 8426 ET

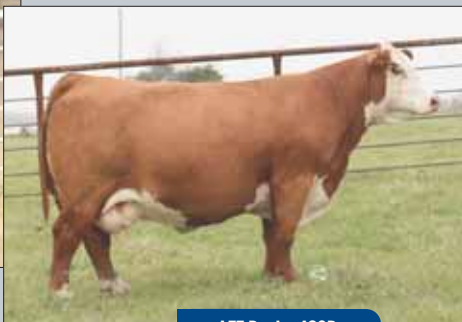
WOMACK LADY RACHAEL 2216

CHURCHILL PILGRIM 632D ET
RST GAT NST Y79D LADY 54B ET
MSU XEROX 20X
GRANDVIEW LITTLE LADY 6177

- These embryos are out of Victoria Chapman's Rachael donor. She has produced several great females that have sold in our sales, and they have been extremely successful in the show ring and in production. She is a perfect uddered female with impeccable looks and structure. She was stifled last fall and this will be the last embryos out of her.
- The way The Profit has bred for us, this will be an awesome mating.



HAPP BK Valor 37C



LFF Becky 406B

209

3 IVF EMBRYOS REVERSE SORTED FOR FEMALES

Selling one package of three IVF Embryos.
Hereford

HAPP BK VALOR 37C ET

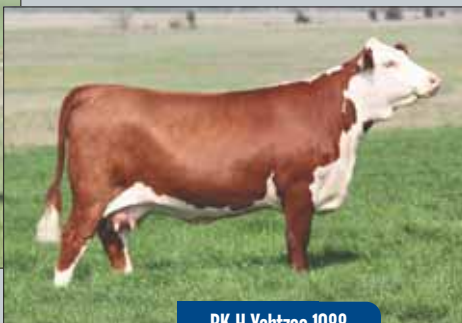
LFF BECKY 406B ET

HAPP EXTRA POINT 1220 ET
JSF 12N LADY VAL 9T
NJW 73S W18 HOMETOWN 10Y ET
H ODETTA 001 ET

- LFF Becky 406B is one of the most impressive females you will lay your eyes on, massive bodied, big hiped, attractive, and good uddered.
- Valor has worked well, siring cattle with a sharp look and added power.



LCX Perfecto 11B



BK H Yahtzee 1088

210

3 IVF EMBRYOS REVERSE SORTED FOR FEMALES

Selling one package of three IVF Embryos.
Hereford

LCX PERFECTO 11B ET

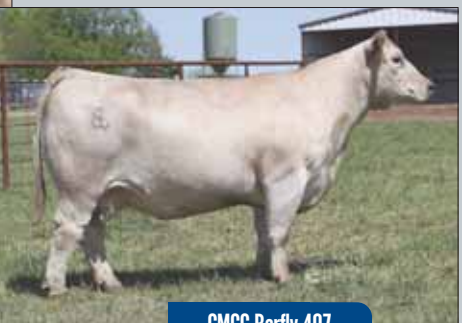
BK H YAHTZEE 1088

NJW 98S R117 RIBEYE 88X ET
WLL ZOEY 3Z
CRR ABOUT TIME 743
NJW 78P 63N LADYSPORT 51W ET

- Perfecto has been a great sire for our program, making cattle with style, balance, power, calving ease, and awesome producing females.
- Yahtzee is a power cow, she is huge bodied, great feet and legs, and loaded with maternal greatness. The Merritt family purchased Yahtzee two years ago to add to their donor battery.



BKMT Game On 227G



CMCC Barfly 407

211

3 IVF EMBRYOS

Selling one package of three IVF Embryos.
PB Maine-Anjou

BKMT GAME ON 227G ET

CMCC BARFLY 407

BOE GARTH
BK JFR ZANELLA 227
BK UNLIMITED POWER 472
BK YAT KAT 126

- Here is an interesting mating of two stunning individuals. Sired by BKMT Game On, which was the Grand Champion Bull at the 2020 American Royal and Reserve Champion Bull at the 2021 Cattlemen's Congress. His offspring are standouts in our 2021 calf crop. The donor dam is CMCC Barfly 407, which is very unique being a smokey colored 75% Maine female, but she is even more unique in her design and power. Her 2020 fall heifer calf recently sold for \$17,000.
- The offspring from this mating will be purebred Maines.

212 3 IVF EMBRYOS

Selling one package of three IVF Embryos.
Maine-Anjou

BKMT GAME ON 227G ET
CMCC COLOR RUN 512

BOE GARTH
BK JFR ZANELLA 227
BK UNLIMITED POWER 472
BK RENEGADE 5010

- Here is a new mating sired by the popular young sire BKMT Game On and out of the proven producing CMCC Color Run 512.
- Color Run has proven she will turn out the great ones, she has produced six heifer calves that have averaged \$9,600.
- The offspring will be purebred Maine-Anjou.



BKMT Game On 227G



CMCC Color Run 512

213 3 IVF EMBRYOS

Selling one package of three IVF Embryos.
Maine-Anjou

BKMT HIGH SOCIETY 10H ET
BK DREAM MAKER 621 ET

BOE EPIC
BK CMCC YVANNA 1010
PVF INSIGHT 0129
BK UT00 872

- Here is one of the most exciting matings we have created this spring. BKMT High Society is a young herd sire we are extremely high on. He is a purebred Epic son and out of Yvanna, which is one of the top producing donors in the Buck and Morton program. The donor dam, BK Dream Maker 621, is sired by Insight out of BK Uto0, she is an absolute beast, huge bellied, massive hiped, and good looking.
- The offspring from this mating will be 75% Maine-Anjou.



BKMT High Society 10H



BK Dream Maker 621

214 3 IVF EMBRYOS REVERSE SORTED FOR FEMALES

Selling one package of three IVF Embryos.
Angus

CONLEY EXPRESS 7211
CONLEY MULBEN PRIDE 8901

SMA WATCHOUT 482
DLP SANDY 3040
5T POWER CHIP 4790
PENNERS MULBEN PRIDE 528

- Here is a purebred Angus mating that is extremely exciting. The sire, Conley Express, has quickly demanded the attention of Angus breeders across the country producing champions and top sellers. We purchased the donor dam 8901 from the Conley program as a bred heifer, she had a successful show career and is stacked with proven cow families. We have the first ET calves on the ground out of 8901 and they are for real.



Conley Express 7211



Conley Mulben Pride 8901

215 3 IVF EMBRYOS

Selling one package of three IVF Embryos.
Maine-Anjou

BOE EPIC
CONLEY MULBEN PRIDE 8901

BOE GARTH
MISS BOE 502R
5T POWER CHIP 4790
PENNERS MULBEN PRIDE 528

- When we purchased 8901 our first plan was to flush her to Epic, we did that and bred her back to him for a natural calf. Her heifer calf is astounding and her ET calves by Epic and Express are crazy good. We are excited about the future of this donor and I am sure when her heifer calves sell this fall we will regret letting these embryos go.
- Offspring will be Maine Angus.



BOE Epic



Conley Mulben Pride 8901



BOE Epic



BK Utoo 872

216

**3 IVF EMBRYOS
REVERSE SORTED FOR FEMALES**

Selling one package of three IVF Embryos.
Maine-Anjou

BOE EPIC
BK UTOO 872

BOE GARTH
MISS BOE 502R
DMCC LIMITED EDITION 4F
PANNELL MISS 4072

- Here is one of the most prominent matings we can offer you. Epic and Utoo have clicked every time, this mating produced the \$75,000 top seller in our 2020 Spring Edition Sale and both sire and dam can write a book on their sons and daughters track records.
- If you aren't a gambler, buy these embryos, because it's a sure bet with no risk.
- Offspring will be Purebred Maine-Anjou



BOE Epic



BK Your Whiskey 1075

217

3 IVF EMBRYOS

Selling one package of three IVF Embryos.
Maine-Anjou

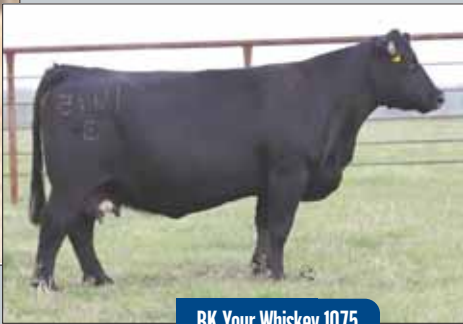
BOE EPIC
BK YOUR WHISKEY 1075 ET

BOE GARTH
MISS BOE 502R
BK UNLIMITED POWER 472
GCC IRISH WHISKEY 001R

- BK Your Whiskey 1075 has been an incredible female from day one, she is phenotypically impressive and her pedigree is flawless.
- Epic is a dominating sire producing the elite herd sires, numerous champions, and countless top sellers.
- The progeny from this mating will be 75% Maine-Anjou.



BKMT Game On 227G



BK Your Whiskey 1075

218

**3 IVF EMBRYOS
REVERSE SORTED FOR FEMALES**

Selling one package of three IVF Embryos.
Maine-Anjou

BKMT GAME ON 227G ET
BK YOUR WHISKEY 1075 ET

BOE GARTH
BK JFR ZANELLA 227
BK UNLIMITED POWER 472
GCC IRISH WHISKEY 001R

- Here is a powerful mating of two elite individuals. Sired by BKMT Game On, which we have his first calves on the ground, and as you can see in this offering they are impressive. The donor dam, BK Your Whiskey 1075, is a proven donor which combines two of the most influential sires in Maine-Anjou history. Her daughters are amazing, they make show prospects but they are producers too.
- The offspring from this mating will be purebred Maines.

Frozen Genetics

219A 5 Units of BOE EPIC

Reg # 474260 BOE GARTH MINN HARD WHISKEY 591Y
 DOB: 03.02.2016 BOE MIS SJOLENE
 75% Maine-Anjou FJH ALL AMERICAN 501L
 Reference Bull MISS BOE 502R

- **LOT 219B** - Selling 5 Units of BOE Epic semen.
- **LOT 219C** - Selling 5 Units of BOE Epic semen.
- **LOT 219D** - Selling 5 Units of BOE Epic semen.
- **LOT 219E** - Selling 5 Units of BOE Epic semen.
- **LOT 219F** - Selling 5 Units of BOE Epic semen.
- **LOT 219G** - Selling 5 Units of BOE Epic semen.
- **LOT 219H** - Selling 5 Units of BOE Epic semen.
- **LOT 219I** - Selling 5 Units of BOE Epic semen.
- **LOT 219JB** - Selling 5 Units of BOE Epic semen.



220A 5 Units of BKMT HIGH SOCIETY 10H

Reg # 515475 BOE GARTH MISS BOE 502R
 DOB: 03.04.2020 BK UNLIMITED POWER 472
 PB Maine-Anjou BK CMCC YVANNA 1010 BK UNFORSAKEN 8050
 Reference Bull

- **LOT 220B** - Selling 5 Units of BKMT High Society 10H.
- **LOT 220C** - Selling 5 Units of BKMT High Society 10H.
- **LOT 220D** - Selling 5 Units of BKMT High Society 10H.



221A 5 Units of H THE PROFIT 8426 ET

Reg # 43916400 NJW 73S W18 HOMETOWN 10Y
 DOB: 02.14.2018 CHURCHILL PILGRIM 632D CHURCHILL LADY 002X ET
 Polled Hereford WORR OWEN THANKERAY Y79D
 Reference Bull RST GAT NST Y79D LADY 54B ET H H LADY MAXIUM 111 ET

- **LOT 221B** - Selling 5 Units of H The Profit 8426 ET.
- **LOT 221C** - Selling 5 Units of H The Profit 8426 ET.
- **LOT 221D** - Selling 5 Units of H The Profit 8426 ET.





WHERE CHAMPIONS ARE A TRADITION

Reference Sires



BOE Epic



BKMT Game On



WB Buck 825



BOE High Society 10H

A BOE EPIC

AMAA Reg# 474260 | 75% Maine-Anjou

BOE GARTH X MISS BOE 502R (FJH All American)

EPD's CE: -2 BW: 2.5 WW: 32 YW: 52 MILK: 40 REA: 0.30 MARB: 0.17

B WB BUCK 825

AAA Reg# 19387782 | PB Angus

S&R ROUNDTABLE J328 X EXAR FRONTIER GAL 4872 (Insight)

EPD's CE: 5 BW: 3.6 WW: 59 YW: 91 MILK: 18 REA: 0.72 MARB: 0.22

C BKMT GAME ON

AMAA Reg# 505128 | PB Maine-Anjou

BOE GARTH X BK JFR ZANELLA 227 (Wisdom)

EPD's CE: 0 BW: 4.0 WW: 52 YW: 66 MILK: 25 REA: 0.29 MARB: 0.04

D BOE HIGH SOCIETY 10H ET

AMAA Reg# 515475 | PB Maine-Anjou

BOE EPIC X BK CMCC YVANNA 1010 (BK Unlimited Power)

EPD's CE: 8 BW: 3.7 WW: 23 YW: 35 MILK: 37 REA: 0.26 MARB: 0.16

E BOE GUNNER 5039G

62.55% Maine-Anjou

BOE EPIC X BK CHANGE OF PLANS 5039 ET (I Deliver)

EPD's CE: 7 BW: 1.9 WW: 38 YW: 48 MILK: 26 REA: 0.26 MARB: 0.06



SR Dominate 308F



H The Profit 8246



JDH AH Standout 16G



ECR 3116 Adventure 7647



BKBH Fast Ball F102

F SR DOMINATE 308F ET

AHA Reg# 43954712 | Horned Hereford

BCC DOMINATOR 619D X CHURCHILL LADY 1162Y ET

EPD's CE: -1.4 BW: 3.7 WW: 63 YW: 114 MILK: 28 REA: 0.73 MARB: 0.09

G H THE PROFIT 8426 ET

AHA Reg# 43916400 | Polled Hereford

CHURCHILL PILGRIM 632D ET X RST GAT NST Y79D LADY 54B ET

EPD's CE: 1.8 BW: 2.9 WW: 63 YW: 108 MILK: 32 REA: 0.59 MARB: 0.07

H JDH AH STANDOUT 16G

AHA Reg# 44014200 | Polled Hereford

S&R JDH 11B STUD 3134 63E X JDH AD MS 34X VICTOR 33Z45C ET

EPD's CE: -0.6 BW: 3.5 WW: 69 YW: 104 MILK: 32 REA: 0.74 MARB: 0.34

I ECR 3116 ADVENTURE 7647 ET

AHA Reg# 43855282 | Polled Hereford

ECR MISS SENSATION 4356 ET X ECR MISS SENSATION 4356

EPD's CE: 11.3 BW: 0.3 WW: 52 YW: 81 MILK: 31 REA: 0.46 MARB: 0.08

J BKBH FAST BALL F102 ET

AHA Reg# 44015577 | Horned Hereford

CRR 719 CATAPULT 109 X BK COOL BEANS 5707C (Mr BG X HAPP Kool Aid 1218)

EPD's CE: 8.7 BW: 2.0 WW: 53 YW: 86 MILK: 24 REA: 0.37 MARB: -0.09

K C KRC 1008X MILES 4288 ET

AHA Reg# 43487300 | Polled Hereford

C MILES MCKEE 2103 X HRR PAY IN GOLD 1008X (IPure Gold)

EPD's CE: -1.4 BW: 4.8 WW: 55 YW: 82 MILK: 44 REA: 0.68 MARB: 0.03

JRL BUCK & FAMILY
18478 Cattle Drive
Madill, OK 73446

**FIRST CLASS
PRE-SORTED
PAID**
Montezuma, Iowa
Permit No. 30

Catalog
designed by



**FRIDAY, MAY 21ST &
SATURDAY, MAY 22ND**

SHARING THE **TRADITION**

COW SALE

